

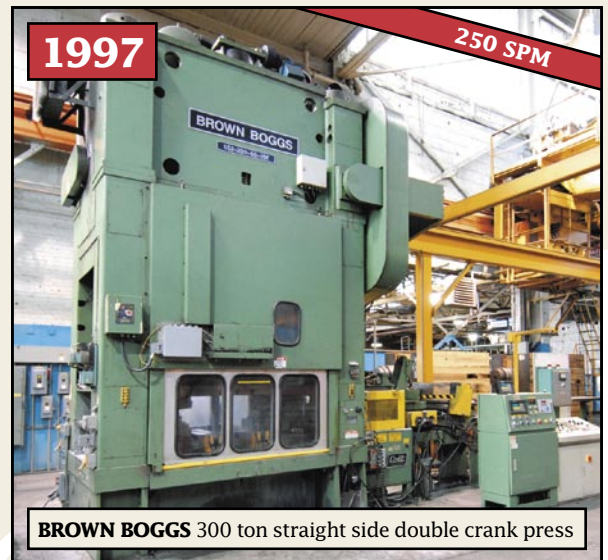
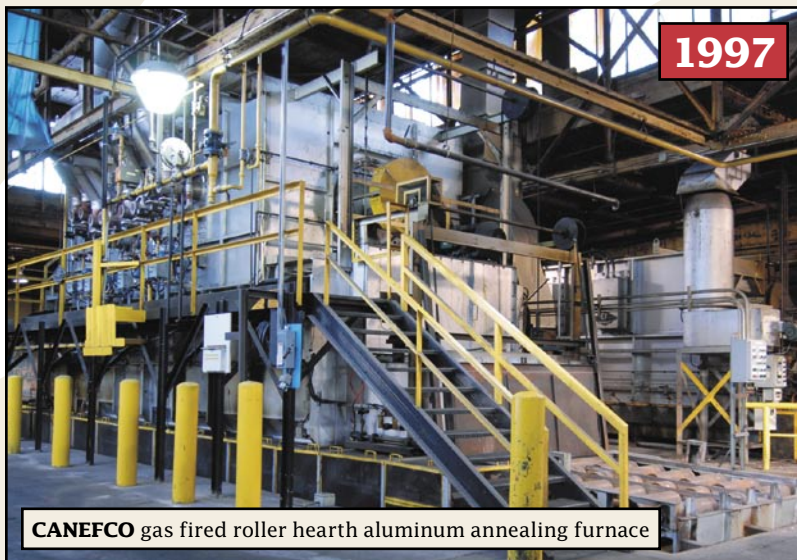
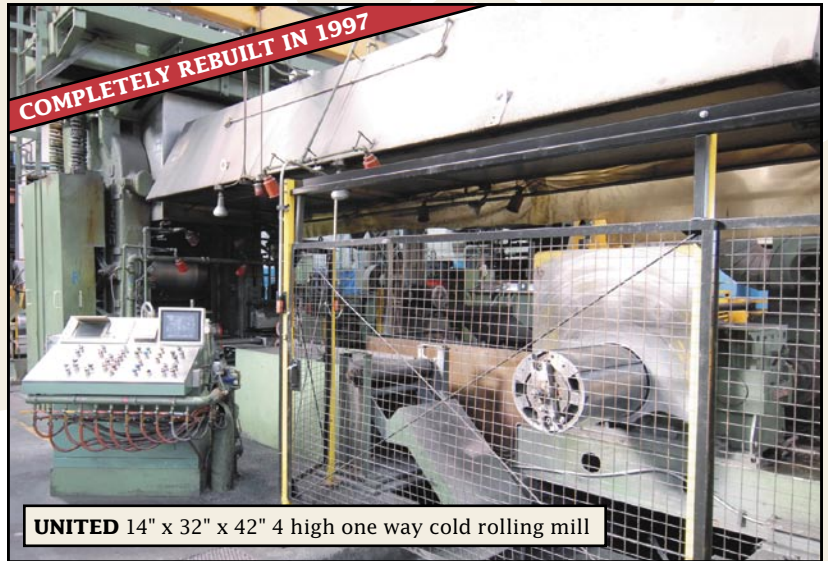
PUBLIC

AUCTION

**INTEGRATED
ALUMINUM
MINI MILL**

**CORPORATE
ASSETS INC**

**UNABLE
TO ATTEND?
BID BY PROXY!**



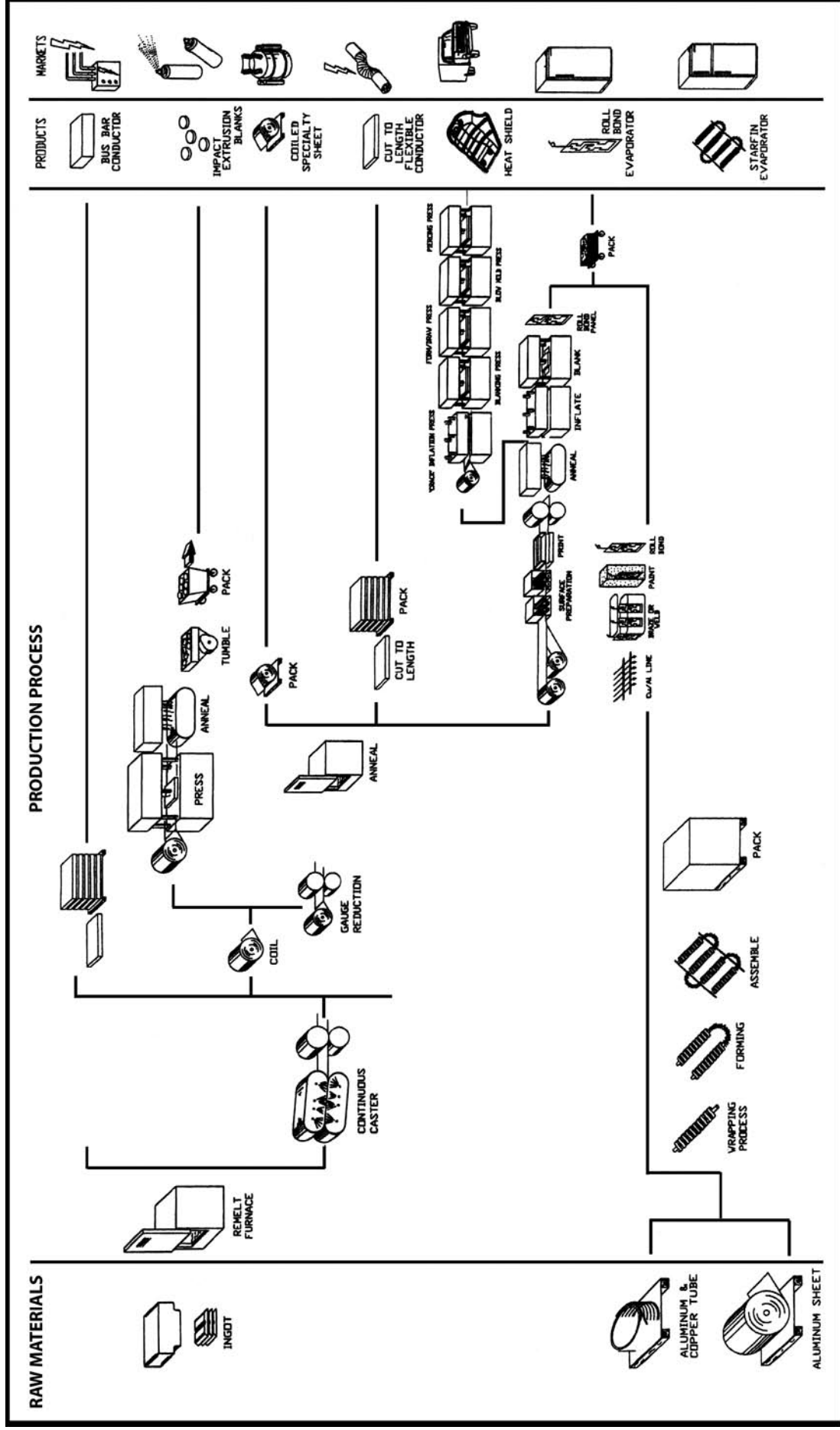
ALGOODS INC./TOWER AUTOMOTIVE

AUCTION: Wednesday, May 16, 2007 at 9:30 A.M.
164 Sterling Road, Toronto, Ontario, Canada M6R 2B8

"Let Our Experience Be Your #1 Asset"™

PROCESS & FLOW CHART

PRODUCT LINE



This brochure is only a partial listing.
VISIT OUR WEBSITE FOR MORE DETAILED LISTINGS AND PHOTOS www.corpassets.com



HAZELETT 14-1 twin belt continuous thin strip casting machine



STAS chlorine distribution system



Inline degasser



NORTH AMERICAN gas fired aluminum melting furnaces

INTEGRATED ALUMINUM MINI MILL

(NOTE: Components may be sold separately or as a complete line)

Consisting of:

(2) NORTH AMERICAN gas fired, 700°C, 17 ton cap. aluminum melting furnaces, melt time 2.5 hours, operating with EPIC II controller, (6) launder tubes with refractory

HAZELETT 14-1 (Completely rebuilt in 2000) twin belt continuous thin strip casting machine with 26" maximum casting width, 3.0" maximum strip thickness, 5/8" minimum strip thickness, 15 FPM maximum output speed at 26" x 3/4", 45 ton/shift slug material runs at 12" width. From here strip goes into STANAT-MANN 2 high hotmill.

STAS 2001 IN LINE ALUMINUM COMPACT DEGASSER, which uses spinning nozzles in the molten aluminum directly in the casting trough prior to filtering and casting. No heating is required nor is there any loss of metal due to flushing when changing alloys. With chlorine distribution panel for 2 cylinders, chlorine scrubber for distribution panel

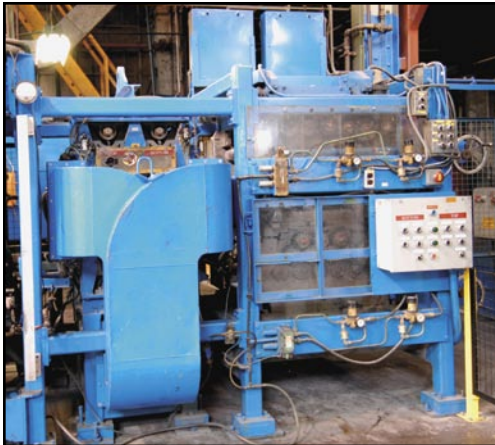


STANAT-MANN 17" x 26" 2 high one way hot rolling mill

STANAT-MANN 17" x 26" 2 high one way hot rolling mill (takes material directly from HAZELETT caster) with 17" roll diameter, 26" roll face, roller bearings, motorized screw-downs, 26" maximum strip width, 2.1" maximum input thickness, 60% maximum reduction, 27 FPM maximum rolling speed @ 60% reduction, entry edge guides, water soluble coolant, 250 HP main mill motor, hydraulic flying crop shear, 100 HP recoiler with hydraulic push-off, single arm turnstile, hydraulic guide to assist placing strip into mandrel slot, gauge, slab catcher used for thicker strip widths in place of mandrel



ALUMINUM STRIP BONDING LINE



(2) custom built strip levelers on common base



UNITED 14" x 32" x 42" 4 high one way cold rolling mill



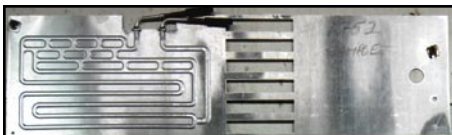
< ABN 4000 KG Recoiler



AMERICAN STEEL LINE 60, traversing mandrel type motorized uncoilers



FORD GT heat shield



Refrigeration Evaporator



Refrigeration Evaporator

ALUMINUM STRIP BONDING LINE

(NOTE: Components may be sold separately or as a complete line)

Consisting of: Used in the production of Heat Shields and Refrigeration Evaporators. The line produces a bonded pair of aluminum strips with a graphite printed pattern between the two layers

Line consists of: **(2) AMERICAN STEEL LINE 60**, traversing mandrel type motorized uncoiler with 18" maximum width, 4,000 lb. maximum coil weight, hydraulic expansion, (2) custom built strip levelers on common base, **CARBORUNDUM VENTRIJET 9CV7** dust collector, guide rolls, 26" wide, gas fired pre-heat cabinet, 48" x 48" silk screening press, notcher to locate panel

UNITED 14" x 32" x 42" 4 high one way cold rolling mill used to bond two aluminum strips up to 26" wide in Bonding Line with 14" work roll diameter, 32" backup roll diameter, 42" roll face, roller bearings, work roll driven, 40" maximum strip width (only up to 26" used), 400 HP main mill motor, motorized screw-downs, 290 FPM maximum rolling speed, PRATT & WHITNEY contact thickness gauge, THYRISTER solid state drive

ABN 4000 KG Recoiler, 40 HP drive, cap. 20" ID x 32" wide x 60" OD. From here the material is annealed and either goes to the Heat Shield Production Line or to the Roll Bond Refrigeration Evaporator Production Line. Prior to the part being inflated a copper tube brazed to an aluminum tube is inserted into the inflation point on the evaporator or heat shield and welded into place. These tube assemblies were produced on one of two tube fabricating lines. Diameters ranged from 1/4" to 5/8".

The Heat Shield Line consists of an Inflation Press, Blanking Press, Form/Draw Press, Blow Mold Press and Piercing Press

The Roll Bond Line consists of an Inflation Press, and Blanking Press

The maximum cap. of these lines is limited by the maximum strip width which is 26"

The maximum length can be up to 48". One of the larger parts made here was the floor pan sections for the Ford GT Sports Car. Other various heat shields were produced for the automotive industry.

Roll Bond Refrigeration Evaporators were produced in various sizes. Many are used in commercial coolers. Maximum size based on 26" width strip is 26" x 48"



Refrigeration Evaporator

This brochure is only a partial listing. VISIT OUR WEBSITE FOR



FJELLMANS 1,440 ton hydraulic inflation press

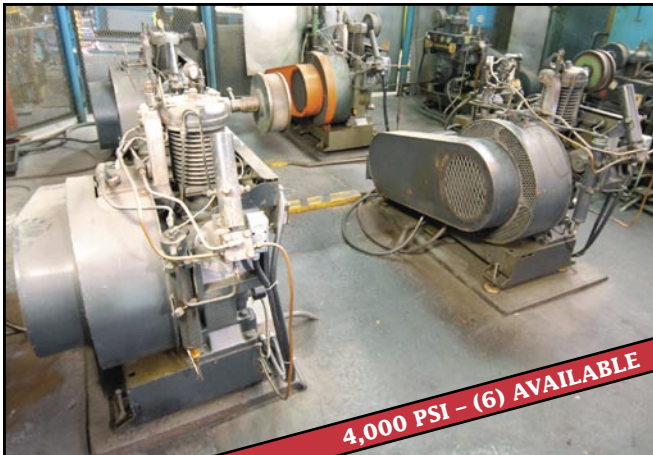


WEAN UNITED 1,500 ton hydraulic inflation press



COMPAIR REAVELL 5000 50 HP 4 stage reciprocating compressors

1,015 PSI - (2) AVAILABLE



4,000 PSI - (6) AVAILABLE

ALCAN evaporator cap tube insertion carousel with soldering station

INGERSOLL-RAND H15T4X20 20 HP skid mounted 3 stage reciprocating compressors



HYDRAULIC INFLATION PRESSES

WEAN UNITED 1,500 ton hydraulic inflation press with 100" x 36" platen, 4" DLO, light guards

FJELLMANS 1,440 ton hydraulic inflation press with 111" x 42" platen, 2" DLO, light guards, s/n 452

HIGH PRESSURE AIR COMPRESSORS

(2) COMPAIR REAVELL 5000 50 HP 4 stage reciprocating compressors with 1,015 PSI cap., s/n 53362200, 53W63A135

(6) INGERSOLL-RAND H15T4X20 20 HP skid mounted 3 stage reciprocating compressors with 4,000 PSI cap.



BIMETAL CAP TUBE manufacturing line

BIMETAL CAP TUBE MANUFACTURING LINE

(NOTE: Components may be sold separately or as a complete line)

Consisting of: double end uncoilers, **WELDUN** tube straightener & cutoff stations, 30' incline rack, **LEPEL** 700775 induction heater, insertion station, automatic brazing station, blowout unit, capillary line cut off, **LANGELIER** B swagers, s/n 30965, 54540

KEYHOLE leak tester

**This Sale Conducted
In US FUNDS**



BROWN BOGGS 300 ton straight side double crank press



COLT
CGDRR
60-18
recoiler

IMPACT EXTRUSION SLUG BLANKING LINES

(NOTE: Components may be sold separately or as a complete line)

300 Ton Blanking Line Consisting of:

COLT 1997 CHDRCK 100-18 traversing, mandrel type motorized uncoiler with 18" maximum width, 10,000 lb. maximum coil weight, hydraulic expansion, 10,000 lb. coil car, tension control arm, s/n 1201564

COLT 1997 CPSH 18 seven roll straightener with 18" maximum width, .160" maximum thickness, entry and exit rolls, s/n 1131099

COLT 1997 CERF 6018 servo driven roll feeder with INDRAMAT control, 18" maximum width, .250" maximum thickness, edge trimmer, edge guides, hold down roll, s/n 114 1103

BROWN BOGGS 1997 SS2 300 straight side double crank press with 300 ton cap., 60" x 40" bed, 2" stroke, 20" shut height, 10" adjustment, 0 to 250 SPM, 36" windows, automatic lubrication, light guards, PRESS-MASTER PM1.5 PLC control, s/n 97102

COLT CTS18 18" roll feed, s/n 3-160-1237

COLT CGDRR 60-18 recoiler with 18" maximum width, hydraulic push off, tension control arm, s/n 1201565

Enjoy the convenience of
MEMBERSHIP
Introducing the
Corporate Assets Membership Program!

We recognize the value of time, that's why we've developed a program that streamlines your auction process! By offering a full range of services and benefits, we're committed in helping you save time, money, and making your auction experience as efficient as possible.

Join Today to Start Receiving Your Benefits!

For more details about Member Services, visit our website at: www.corpassets.com



COLT CHDRCK 100-18 traversing, mandrel type motorized uncoiler & **COLT** CPSH 18 seven roll straightener



COLT CERF 6018 servo driven roll feeder



10,000 lb. coil upender

This brochure is only a partial listing. VISIT OUR WEBSITE FOR



MINSTER SE2 250 108-48 straight side double eccentric press



NIAGARA SA2 200 straight side press with BRADBURY servo driven roll feeder

IMPACT EXTRUSION SLUG BLANKING LINES, continued

250 Ton Blanking Line Consisting of:

ROWE 10030-DSV mandrel type motorized uncoiler with 30" maximum width, 10,000 lb. maximum coil weight, hydraulic expansion, s/n 12968

ROWE B-30 seven roll straightener with 30" maximum width, .030" minimum thickness, .065" maximum thickness, entry and exit rolls, s/n 26098

COE OPRF-S230 servo driven roll feeder with INDRAMAT control, 24" maximum width

MINSTER SE2 250 108-48 straight side double eccentric press with 250 ton cap., 108" x 48" bed, 16" stroke, 42.5" shut height, 10" adjustment, 20 SPM, 28" windows, 6.5" bolster, automatic lubrication, light guards, PRESSMASTER PM1.5 PLC control, s/n 13588.

200 Ton Blanking Line Consisting of:

SMS HRS BL5 traversing, mandrel type, motorized uncoiler with 16" maximum width, 10,000 lb. maximum coil weight, hydraulic expansion, tension control arm, s/n 67 13260

SMS AS 12 748 seven roll straightener with 12" maximum width, entry and exit rolls. s/n 715659

BROWN BOGGS 330S straight side single crank press with 200 ton cap., 30" x 31" bed, 3" stroke, 24.5" shut height, 65 to 150 SPM, AUTOMATIC FEED mechanical roll feed, s/n 67421

BRADBURY recoiler with 14" maximum width, hydraulic push off, tension control arm

200 Ton Blanking Line Consisting of:

BRADBURY SR6-5DE double end, mandrel type, motorized uncoiler with 18" maximum width, 6,500 lb. maximum coil weight, hydraulic expansion, tension control arm, s/n 2226

BRADBURY seven roll straightener with 18" maximum width, entry and exit rolls

BRADBURY servo driven roll feeder with INDRAMAT control, 20" maximum width

NIAGARA SA2 200 48-30 straight side double crank press with 200 ton cap., 48" x 30" bed, 2" stroke, 100 to 300 SPM, 24" windows, 2" bolster, automatic lubrication, light guards, PRESSMASTER PM1.5 PLC control

BRADBURY recoiler with 14" maximum width, hydraulic push off, tension control arm



BRADBURY 6,500 lb. double end uncoiler & BRADBURY seven roll straightener



COE OPRF-S230 servo driven roll feeder



ROWE 10030-DSV 10,000 lb. motorized uncoiler



ROWE B-30 seven roll straightener



View of impact extrusion disk die shoes



Partial view of impact extrusion disk punches & dies



SLUG FINISHING LINE



SLUG ANNEALING/FINISHING LINE



MINSTER 56 ton OBG press with **MECON** 400F12-1 servo driven roll feeder



BROWN BOGGS 4,000 lb. motorized uncoiler & **BROWN BOGGS** 18" wide straightener



WEPACKIT case closer

IMPACT EXTRUSION SLUG BLANKING LINES, continued

56 Ton Blanking Line Consisting of:

BROWN BOGGS mandrel type motorized uncoiler with 18" maximum width, 4,000 lb. maximum coil weight, hydraulic expansion, tension control arm, s/n 69488

BROWN BOGGS S16 532 18" wide straightener, s/n 69484

MECON 400F12-1 servo driven roll feeder with INDRAMAT control, 12" maximum width, s/n 3004

MINSTER 70-4 OBG press with 56 ton cap., 8" stroke, 21" x 32" bed, WINTRISS PROCAM 1500 PLC control

BROWN BOGGS PWT 606 ICS recoiler with 18" maximum width, hydraulic push off, tension control arm, s/n 69490

Large assortment of multicavity, progressive dies for the manufacture of impact extrusion slugs from .218" to 4.5" diameter

SLUG FINISHING EQUIPMENT

(NOTE: Components may be sold separately or as a line)

SLUG ANNEALING/FINISHING LINE Consisting of:

Approx. 40 cubic ft. hopper, **SYNTRON** 36F vibratory feeder, **CANEFECO** electric 48" continuous steel mesh belt annealing furnace with 550°C maximum temperature, approx. 18' long, s/n C4787F1, conveyor, bucket elevator, **SYNTRON** vibratory bowl feeder, **ALMCO** TF3232 auger type tumbler discharge conveyor, **BIZERBA** platform scale, **WEPACKIT** MPE 300 case closer, s/n 1549, **WEPACKIT** MPT 300 case packer, s/n 1550 (NOTE: Components may be sold separately or as a line)

SLUG FINISHING LINE Consisting of:

VIBRA UF21U 103" x 29" x 28" vibratory finishers

ALMAC 36" bidirectional trough bed belt conveyor

TORIT #81 dust collectors

WEBSTER FSH 30" x 18' vibrating conveyor

ACADIA 13" x 18' incline trough bed belt conveyor

AUCTION CONDUCTED BY CORPORATE ASSETS INC.

For further information contact us at: 2 St. Clair Ave. W., Suite 1002, Toronto, Ontario, Canada M4V 1L5
Tel: (416) 962-9600 • Fax: (416) 962-9601 • Email: info@corpassets.com • Web: www.corpassets.com
Toronto • Montreal • Chicago

This brochure is only a partial listing. VISIT OUR WEBSITE FOR



BERTOLETTE tube straightener & cutoff



Incline rack



BRANSON 184P ultrasonic welding station



VENABLES Starfin strip opener & winder



Programmable bender



Close up of **STARFIN** structure



View of **STARFIN** evaporator

SLUG FINISHING EQUIPMENT, continued

BATHURST TOOL STARFIN manufacturing line consisting of:

Motorized uncoiler, **BERTOLETTE** tube straightener & cutoff, 30' incline rack, tube descrambler, roller feed unit, hydraulic crimp station, **VENABLES** starfin strip opener & winder, programmable bender, **BRANSON** 184P ultrasonic welder

This line automatically produces STARFIN evaporators (see photo) used in refrigeration. Starting with one coil of $\frac{3}{8}$ " diameter aluminum tube and one coil of approx. 1" wide, light gauge aluminum strip it straightens, measures and cuts the tube to length while folding and slitting the strip into the STARFIN configuration; it then automatically wraps the fin material around the tube, bends the tube into the correct pattern and ultrasonically welds the fin material in place.

APPRAISAL SERVICES

What's the real value of your equipment? If you require a detailed appraisal for banking, insurance, or internal purposes, consult with the certified experts at Corporate Assets Inc.

- We will appraise one machine or your complete plant
- Going concern, fair market, or liquidation values

We provide appraisal services anywhere in the world for all types of industrial manufacturing and processing equipment. Call us in complete confidence today with your requirements.

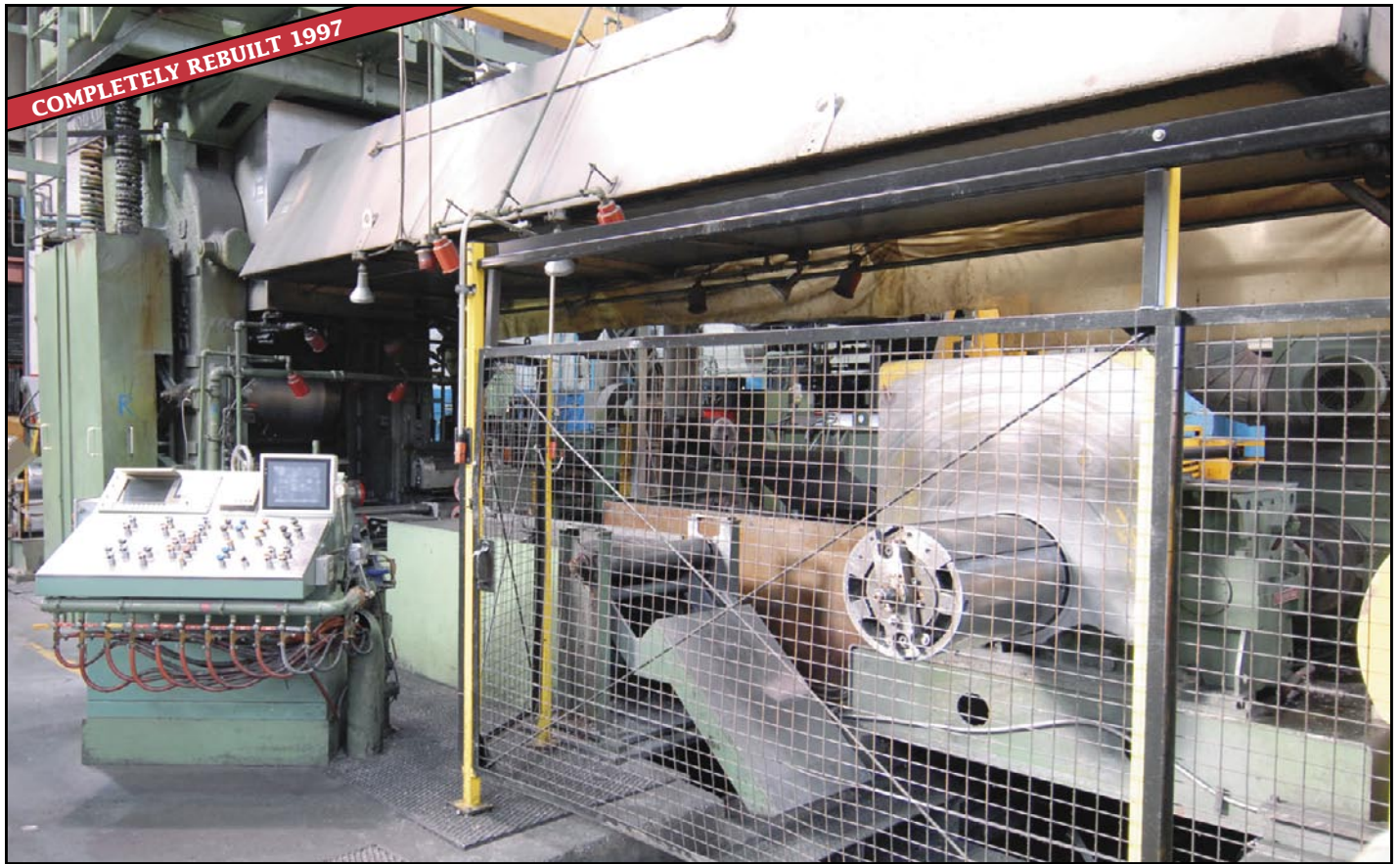
Phone: (416) 962-9600

Fax: (416) 962-9601

Email: appraisals@corpassets.com

Toronto • Montreal • Chicago

MORE DETAILED LISTINGS AND PHOTOS www.corpassets.com



UNITED 14" x 32" x 42" 4 high one way cold rolling mill

ROLLING MILLS

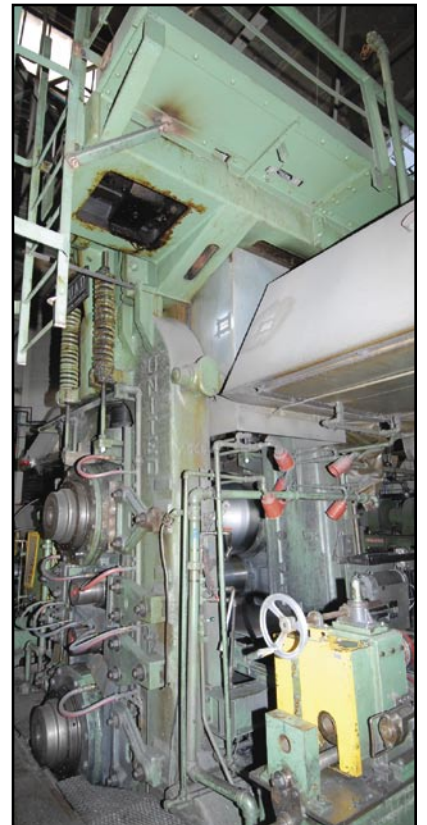
UNITED (completely rebuilt by QUAD ENGINEERING in 1997 — **like new condition**) 14 x 32 x 42 4 high one way cold rolling mill with 14" work roll diameter, 32" backup roll diameter, 42" roll face, roller bearings, 40" maximum strip width (only up to 26" used), .500" maximum input thickness, .050" finish thickness, 13,500# maximum coil weight, 20" coil ID, 63" coil OD, 600 FPM maximum rolling speed, QUAD ENGINEERING Controls, VOLLMER Gauge w/automatic gauge control, mechanical screw-downs, work roll driven, 1,300 HP main mill motor, payoff reel w/hold down and peeler, rewriter w/belt wrapper and pushoff, entry crop shear, dual edge splitter w/baler, CO2 fire suppression system



Rewriter with belt wrapper and pushoff



Payoff reel with holddown and peeler



UNITED 14" x 32" x 42" 4 high one way cold rolling mill

**This Sale
Conducted In
US FUNDS**

This brochure is only a partial listing. VISIT OUR WEBSITE FOR MORE DETAILED



ROBERTSON 6 1/2" x 14 1/2" x 24" 4 high one way cold rolling mill



KENSINGTON 16" x 24" 2 high one way cold rolling mill



LEWIS 20" x 44" 2 high, one way, cold rolling mill

ROLLING MILLS, continued

LEWIS 20" x 44" 2 high, one way, cold rolling mill with 20" roll diameter, 44" roll face, roller bearings, 40" maximum strip width, 4,000 lb. maximum coil weight, 20" coil ID, 60" coil OD, 90 FPM maximum rolling speed, gauge, motorized screw downs, entry edge guides, 400 HP DC main mill motor, BLISS motorized uncoiler with D.O. JAMES 270 HD gear box, BLISS motorized recoiler w/D.O. JAMES 300 HD gear box, 100 HP MG set

KENSINGTON 16" x 24" 2 high one way cold rolling mill with 16" roll diameter, 24" roll face, roller bearing, 12" present strip width, .500" maximum input thickness, .180" (capable of .005") minimum output thickness, 7500# maximum coil weight, 20" coil ID, 60" coil OD, 125 FPM maximum rolling speed, QUAD ENGINEERING controls, PRATT & WHITNEY contact gauge with automatic gauge control, mechanical screw-downs, 200 HP main mill motor, MECON mandrel type motorized uncoiler with 16" maximum width, 4,000 lb. maximum coil weight, hold down, 25 HP, AMERICAN STEEL LINE recoiler

ROBERTSON 6 1/2" x 14 1/2" x 24" 4 high one way cold rolling mill with 6 1/2" work roll diameter, 14 1/2" backup roll diameter, 24" roll face roller bearings, 16" maximum strip width, 6" minimum strip width, 0.1" maximum input thickness, 0.005" finish thickness, 4,000 lb. maximum coil weight, 20" coil ID, 60" coil OD, 1,100 FPM maximum rolling speed, INDEV INP4-11 gauging system, automatic gauge control through mechanical screw-downs, 5 HP work roll driven, 300 HP main mill motor, exit two arm turnstile, ROBERTSON mandrel type motorized uncoiler with 20" maximum width, 4,000 lb. maximum coil weight, 20" ID, ROBERTSON recoiler 20" ID 5 HP w/hydraulic push off, motor generator plus solid state DC, roll changing sled



MACRODYNE 400 ton straight side hydraulic press



HYDROPRESS 440 ton double action hydraulic press



DAKE 100 ton four post hydraulic press



LOGAN 50 ton four post hydraulic press



VERNON 500 ton hydraulic straight side press



ALLSTEEL 8X3 straight side hydramechanical platen

HYDRAULIC PRESSES

VERSON 500 ton hydraulic straight side press with 45" x 45" bed, approx. 30" stroke, MODICON PANELMATE PLUS PLC control, (2) MECON 20" roll feeds

HYDROPRESS 440 ton double action hydraulic press with 325 ton blankholder, 115 ton punch, 42" x 42" bed, approx. stroke blankholder 28", punch 14", (2) MECON 18" roll feeds

MACRODYNE 2001 MPZ 400 straight side hydraulic press with 400 ton cap., 96" x 48" bed, 24" stroke, 46" DLO, 20" windows, 5.5" bolster, speeds; fast approach 1,000 IPM, maximum pressing speed 600 IPM, fast return 1,200 IPM, light guards, CTC PARKER PLC control, s/n 200173

KELLY 300 ton four post hydraulic press with 82" x 50" bed, 30" stroke, 48" DLO, light guards, MAGELIS PLC control

PACIFIC straight side hydraulic press with 300 ton cap., 100" x 48" bed, 15" stroke, 38" DLO, 23.5" windows, light guards

ALLSTEEL 8X3 straight side hydra mechanical platen press with 120 ton cap., 96" x 36" bed, 8" stroke, 17" DLO, s/n P1293

DAKE 100 ton four post hydraulic press with 72" x 48" bed, 16" stroke, 34" DLO, light guards

LOGAN 50 ton four post hydraulic press with 84" x 32" bed, 20" stroke, 37" DLO, light guards

LOGAN 50 ton four post hydraulic press with 84" x 32" bed, 20" stroke, 37" DLO, light guards



PACIFIC 300 ton straight side hydraulic press



KELLY 300 ton four post hydraulic press

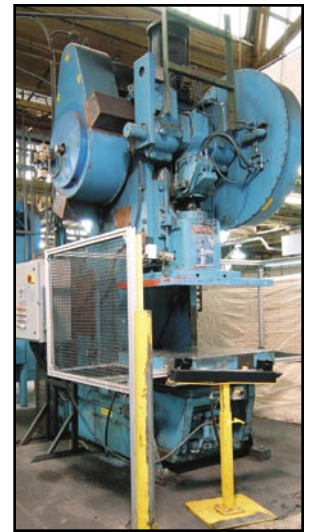
This brochure is only a partial listing. VISIT OUR WEBSITE FOR



MINSTER SE2 250 108-48 straight side double eccentric press



ROUSSELLE S2 300 96 48 straight side double crank



NIAGARA M110 back geared OBI press



JOHNSON 150 BG AC back geared OBI press



WARCO 250-2-84 straight side double crank press

PROXY BIDDING

If you are unable to attend this auction, we would be pleased to act as your proxy. Please contact our office at (416) 962-9600 or visit our website for a proxy bid form, terms and additional information.

MECHANICAL PRESSES

ROUSSELLE S2 300 96 48 straight side double crank press with 300 ton cap., 96" x 48" bed, 14" stroke, 31" shut height, 8" adjustment, 35 SPM, light guards, PRESSMASTER PM1.5 PLC control

MINSTER SE2 250 108-48 straight side double eccentric press with 250 ton cap., 108" x 48" bed, 16" stroke, 42.5" shut height, 10" adjustment, 20 SPM, 28" windows, 6.5" bolster, automatic lubrication, light guards, PRESSMASTER PM1.5 PLC control, s/n 13583

CLEVELAND SD2 250 72 54 straight side double crank press with 250 ton cap., 72" x 54" bed, 12" stroke, 36" shut height, 6" adjustment, 18 SPM, 7" bolster, light guards, PRESSMASTER PM1.5 PLC control

WARCO 250-2-84 straight side double crank press with 250 ton cap., 84" x 48" bed, 18" stroke, 36" shut height, 8" adjustment, 12 SPM, 23" windows, 6" bolster, light guards, PRESSMASTER PM1.5 PLC control

CLEARING SG2 150 96 40 double crank gap frame press with 150 ton cap., 96" x 40" bed, 16" stroke, 54" shut height, 6" adjustment, 25 SPM, 6.5" bolster, 9.5" punch plate, 5.75" riser, light guards, PRESSMASTER PM1.5 PLC control

MECHANICAL PRESSES, continued

CHICAGO 510 DSS straight side double crank press with 150 ton cap., 125" x 42" bed, 5" stroke, 14" shut height, light guards, PRESSMASTER PM1.5 PLC control, s/n P850

NIAGARA PN150 72 36 double crank gap frame press with 150 ton cap., 72" x 36" bed, 6" stroke, 14" shut height, 5" adjustment, 30 to 50 SPM, 3" bolster, light guards, PRESSMASTER PM1.5 PLC control

NIAGARA M110 back geared OBI press with 110 ton cap., 42" x 27" bed, 8" stroke, 24" shut height, 40 SPM, 5" bolster, air friction clutch, light guards, PRESSMASTER PM1.5 PLC control

JOHNSON 150 BG AC back geared OBI press with 150 ton cap. 50" x 30" bed, 6" stroke, 28" shut height, 35 SPM, 2" bolster, air friction clutch, light guards, PRESSMASTER PM1.5 PLC control

(2) BLISS 21 OBI presses with air actuated mechanical clutch



CLEVELAND SD2 250 72 54
straight side double crank press



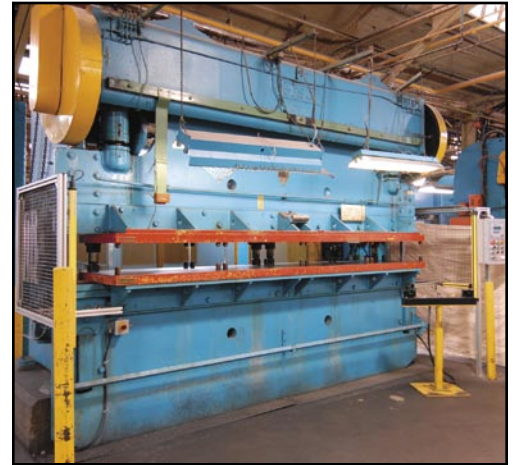
CLEARING SG2 150 96 40 double crank
gap frame press



NIAGARA PN150 72 36 double crank
gap frame press



CHICAGO 510 DSS straight side double
crank press



VERSON 150 ton x 12' mechanical press brake

CINCINNATI 50 ton x
12' mechanical
press brake

PROXY BIDDING

If you are unable to attend this auction, we would be pleased to act as your proxy. Please contact our office at (416) 962-9600 or visit our website for a proxy bid form, terms and additional information.



HAUSEN 10' x 16 ga. mechanical shear



WYSONG 10' x 16 ga.
mechanical shear



WYSONG 6' x 10 ga.
mechanical shear

This brochure is only a partial listing. VISIT OUR WEBSITE FOR

FURNACES



1997

CANEFCO gas fired roller hearth aluminum annealing furnace



1996

GASMAC gas fired, 66" steel mesh belt heat treat furnace

**This Sale
Conducted
In US FUNDS**

CANEFCO 1997 gas fired roller hearth aluminum annealing furnace with 600°C maximum temperature, maximum output 4,000 lbs./hr., 8' x 3' opening, approx. 44' long, ALLEN BRADLEY PANEL-VIEW 1400e PLC control, s/n C6023 F1

GASMAC 1996 gas fired, 66" steel mesh belt heat treat furnace with (12) spray type quench heads, s/n JW040094

CANEFCO electric roller hearth aluminum annealing furnace with 600°C maximum temperature, maximum conveyor speed 2.3"/min., 8' x 2.5' opening, approx. 37' long, HONEYWELL control, s/n CC5748-F1

CANEFCO electric car bottom aluminum annealing furnace with 650°C maximum temperature, 8' x 6'5" opening, approx. 22' long, s/n C5559F1

MFG. UNKNOWN electric car bottom aluminum annealing furnace with 650°C maximum temperature, 8' x 5' opening, approx. 21' long



CANEFCO electric roller hearth aluminum annealing furnace



CANEFCO electric car bottom aluminum annealing furnace

MORE DETAILED LISTINGS AND PHOTOS www.corpassets.com



24" SLITTING LINE



PANGBORN 6GNI-R36 barrel type blast cleaning system

SLITTING LINES

24" SLITTING LINE consisting of:

B&K 6WW24 traversing, mandrel type motorized uncoiler with 24" maximum width, 6,000 lb. maximum coil weight, hydraulic expansion, tension control arm, s/n 107

BRADBURY RS 55 straightener with 26.5" maximum width, entry and exit rolls, s/n 212

BRADBURY 330 slitting head with 26" maximum width, .100" maximum material thickness, 3" diameter arbors, scrap rewinder & chopper exit guide rolls

B&K 6RG recoiler with 24" maximum width, hydraulic push off, overarm separator, s/n 100, single arm turnstile coil upender

40" SLITTING LINE Consisting of:

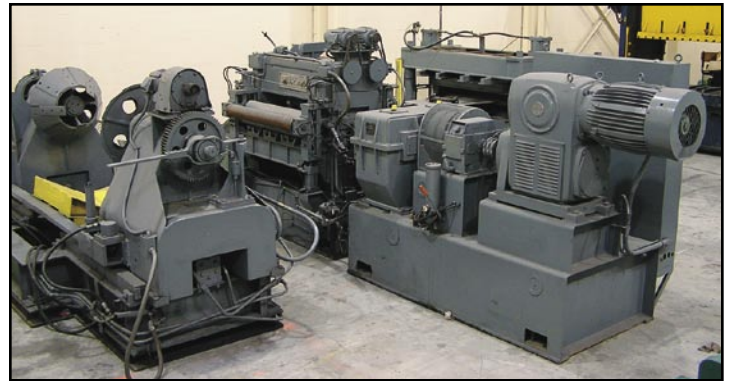
ARM traversing mandrel type motorized uncoiler with 48" maximum width, 6,000 lb. maximum coil weight, hydraulic expansion, tension control arm

LSE tension control arm with strip feed table

ARM slitting head with 60" maximum width, .240" maximum material thickness, 4.5" diameter arbors

ARM scrap winder

ARM recoiler with 40" maximum width, hydraulic push off, overarm separator, tension control arm, single arm turnstile



MCKAY 52" x 10 ga. cut to length line



40" SLITTING LINE

CUT TO LENGTH LINES

MCKAY 52" x 10 ga. cut to length line with 20,000 lb. cone type uncoiler, 10 roll precision leveler, 52" x 10 ga. mechanical shear (to be sold by photo)

40" Cut to Length Line Consisting of:

B&K 6U mandrel type motorized uncoiler with 48" maximum width, 6,000 lb. maximum coil weight, hydraulic expansion, s/n 122, **HALDEN 52 7** roll straightener with 40" maximum width, entry and exit rolls, s/n 5224, **HALDEN 43"** mechanical shear, discharge conveyor & unload station

STRIP WASHING LINE

Consisting of:

AMERICAN STEEL LINE mandrel type motorized uncoiler with 36" maximum width, 4,000 lb. maximum coil weight, hydraulic expansion, tension control arm

BLISS 9 roll leveler with 36" maximum width

PROCECO WDB-36-G gas fired cabinet type washer with 36" cap., 400 gallon wash tank, 200 gallon rinse tank, (2) brush stations, s/n 178

ABN recoiler with 36" maximum width, hydraulic push off, tension control arm, s/n 1202/81



STRIP WASHING LINE



40" CUT TO LENGTH LINE

Visit our website to Pre-Register for this Auction



DOMINION BRIDGE 20 ton double girder top running bridge crane



NELSON 7.5 ton free standing crane system



NELSON 2 & 3 ton single girder underslung bridge cranes



NELSON free standing crane system with 7.5 & 5 ton single girder underslung bridge cranes



CM 2045 KG jib hoist



NELSON 5 ton free standing crane system



NELSON 3 ton free standing crane system

CRANES

DOMINION BRIDGE 20 ton double girder top running bridge crane with 90' span, cab controlled

NELSON free standing crane system with 7.5 ton single girder underslung bridge crane, 5 ton single girder, underslung bridge crane, 30' span, pendant control, 40' runway bus bar, I beams & columns

NELSON free standing crane system with 7.5 ton single girder underslung bridge crane, 30' span, pendant control, 50' runway bus bar, I beams & columns

NELSON free standing crane system with 5 ton single girder underslung bridge crane, 16' span, pendant control, 27' runway bus bar, I beams & columns

NELSON free standing crane system with 3 ton single girder underslung bridge crane, 16' span, pendant control, 20' runway bus bar, I beams & columns

NELSON 3 ton single girder underslung bridge crane with 34' span, pendant control

NELSON 2 ton single girder underslung bridge crane with 34' span, pendant control

AIR COMPRESSORS & DRYERS

LEROI 200SSW rotary screw air compressor with 200 HP drive

COMPAIR 2005 6000C rotary screw air compressor with 150 HP drive

ATLAS COPCO 20 HP hydra vain air compressor

FRIULAIR 2005 PURESTREAM air dryer, s/n 051004092

FRIULAIR 2005 PURESTREAM air dryer, s/n 051004092



ENCIRC 480 ton reservoir type water cooling tower



COIL EQUIPMENT

MECON 10036H mandrel type motorized uncoiler with 48" maximum width, 10,000 lb. maximum coil weight, hydraulic expansion

GARY 4910 36 mandrel type motorized uncoiler with 36" maximum width, 10,000 lb. maximum coil weight, hydraulic expansion, s/n 217

SMS 10036 mandrel type motorized uncoiler with 36" maximum width, 10,000 lb. maximum coil weight, hydraulic expansion, s/n 10036

LSE mandrel type motorized uncoiler with 36" maximum width, 10,000 lb. maximum coil weight, hydraulic expansion

LSE seven roll straightener with 32" maximum width, entry and exit rolls

MCS straightener with 32" maximum width, entry and exit rolls



FRIULAIR PURESTREAM air dryer



COMPAIR 150 HP rotary screw air compressor

FABRICATION EQUIPMENT

CINCINNATI 3-50 mechanical press brake with 50 ton cap., 12' overall bed length, 10'6" between the housings, 3" stroke, (4) 12" x 48" removable angles

VERSON B712 mechanical press brake with 150 ton cap., 12' overall bed length, 10'6" between the housings, 3" stroke, (4) 13" x 69" removable angles, light guards

WYSONG 10' x 16 ga. mechanical shear with squaring arm, front supports, discharge conveyor

HAUSEN 10' x 16 ga. mechanical shear with squaring arm, front supports

WYSONG 6' x 10 ga. mechanical shear with squaring arm, front supports

DOALL ZEP vertical bandsaw with 16" throat, blade welder & grinder, s/n 2461 4716

GROB NS 36 vertical bandsaw with 36" throat

BROWN BOGGS #3 50" sheet metal rolls

LINDE UCC 305 300 AMP MIG welder

WALES STRIPPIT 10 ton single end punch

DIACRO 14 48 mechanical press brake with 4' x 14 ga. cap.

BROWN BOGGS 4' x 10 ga. mechanical shear



CONVIRON C915RN
14' x 8' x 8' environmental chamber



LEPEL induction heating power



G&R electrostatic spray system with fiberglass booth



HYDROMATION HV 4H-180 central coolant filtration



FARO S08-24 3D portable coordinate measurement machine

This brochure is only a partial listing. VISIT OUR WEBSITE FOR



UNIMET UNITRON 8280
inverted metallurgical
microscope



BUEHLER V grinder/polisher

**This Sale
Conducted
In US
FUNDS**

MACHINE SHOP

UNION BFT80 table type horizontal boring mill with 3.15" spindle, 49.5" x 44.5" power rotary table, 54" cross travel, 67" longitudinal travel, 52" vertical travel, 3 axis DRO

KOPINGS S8 engine lathe with 17" swing, 68" maximum distance between centers, 1.75" spindle bore, 17.5 to 900 RPM, 3 jaw chuck, steadyrest, s/n 2229

STANDARD MODERN 1334 toolroom lathe with 13" swing, 34" maximum distance between centers, 1.5" spindle bore, 36 to 1800 RPM, collet chuck, s/n 0796

MAS VR4 radial arm drill with 4' arm, 12" column, #4 MT, box table, s/n 3883

ELLIOT ram type turret milling machine with 10" x 50" table, 2 HP head, 75 to 5850 RPM, s/n 0153661318

CHENG KI ram type turret milling machine with 9" x 42" table, 2 HP head, slotting head, 2 axis DRO

ELB SW5VAI hydraulic surface grinder with 10" x 20" magnetic chuck, wheel dresser, coolant, dust collector, s/n 80440369

HARIG SUPER 612 6" x 12" manual surface grinder with magnetic chuck

GIUSTINA universal cylindrical grinder with 12" swing, 50" maximum distance between centers, internal grinding attachment

TOS 2UD-500 universal cylindrical grinder with 12" swing, 25" maximum distance between centers, internal grinding attachment, s/n 10722

ELECTROSTATIC PAINT LINE Consisting of: approx. 240 linear feet paint line conveyor

TORRID 5 stage wash, rinse booth approx. 80' long

TORRID 3 pass dry off oven

G&R electrostatic spray system with fiberglass booth

LEES 6000 reciprocating robots with RANSBURG guns & controls

TORRID 4 pass 30' bakes oven



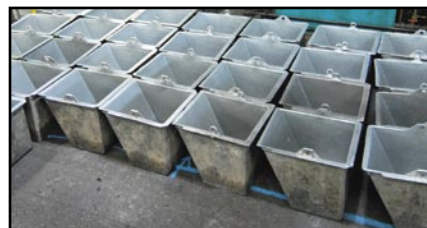
UNION BFT80 table type horizontal boring mill



STANDARD MODERN 1334 toolroom lathe



Large Quantity of Slug Totes



View of Aluminum Totes

PLANT EQUIPMENT

ENCIRC 2002 TS500T5 reservoir type water cooling tower with 480 ton cap., 1,200 GPM flow, LAKEWOOD 1575 control, s/n D020050TS

PANGBORN 1997 6GNI-R36 barrel type blast cleaning system with 48" x 36" opening, 6 cubic foot (29" x 37") barrel, 960 lb. maximum load cap. with hopper, infeed & outfeed conveyors, programmable weighing scale system, s/n S970475

HYDROMATION HV 4H-180 central coolant filtration system, s/n 5-2818

(2) CLEAVER BROOKS CT6200-300 gas fired boilers, 250 PSI, 12,552,000 BTU, s/n's CTS-08036, CTS-08035

ELECTRAIR fume extractor

13' x 10' x 8.5'H paint booth with fume extractor

LEPEL LSP12 124 KVA electric induction heating power supply, s/n F33074-4

LEPEL RWWEK-100 electric induction heating power supply, s/n F33094-16

TENNANT D94 7164 LPG floor sweeper, s/n 6550-8604

POWERBOSS CSS/82 LPG floor scrubber, s/n 6395073

SKYJACK 21171 750 lb. cap. scissorlift

ALSO chain hoists, lifting accessories, hydraulic jacks, arbor presses, drill presses, bench grinders, angle plates, jib hoists to 3 ton, welders, upenders,

KARCHER DHS 760 pressure washer, **RED LION** cement mixer, **AEROQUIP** crimper, Approx. (100) 80" x 35" x 13" metal slug trays, Approx. (50) 27" x 24" x 24" aluminum bins, etc.



>
ELB
10" x 20"
hydraulic
surface
grinder

LAB EQUIPMENT

CONVIRON C915RN 14' x 8' x 8' environmental chamber, s/n 86/118

UNIMET UNITRON 8280 inverted metallurgical microscope

FARO S08-24 3D portable coordinate measurement machine, s/n 0802980131

ALLGOODS refrigeration compressor tester

ALSO: BUEHLER V grinder/polisher, **OHAUS** digital scale, **BROOKFIELD** digital viscometer, **BAUCSH & LOMB** microscope, precision gravity convection incubator, **METTLER** DL 35



Misc. Factory Equipment



Heavy Duty Die Racks



< View of Rolling Stock

This brochure is only a partial listing.
VISIT OUR WEBSITE FOR MORE DETAILED
LISTINGS AND PHOTOS www.corpassets.com

INSPECTION

Tuesday, May 15th, 2007
9:00 A.M. to 5:00 P.M.

Please visit our website
at www.corpassets.com for a
Pre-Registration Form

DIRECTIONS

From Toronto's Lester B. Pearson International

Airport: Take Highway 427 South and exit onto Gardiner Expressway East. Proceed east approximately 10km and exit Jameson Avenue North to Queen Street West, turn right, then immediately left on Lansdowne Avenue, proceed to Dundas Street West and turn left, then turn right on Sterling Road. Please allow approximately 1/2 hour traveling time.

ACCOMMODATIONS & CAR RENTALS

Please visit our website for details at
www.corpassets.com

PAYMENT

Please visit our website at www.corpassets.com

A Buyer's Premium will apply at this sale. **This sale will be conducted in US funds**

REMOVAL

Small items by Thursday, May 17th, 2007, 3:00 P.M.;
remainder of items by Thursday, June 7th, 2007, 5:00 P.M.

TERMS

Corporate Assets Inc. assumes no liability for errors or omissions in this brochure. Corporate Assets Inc. expressly reserves the right to determine the manner of conducting the auction as it may deem appropriate. All subject to prior sale.

PROXY BIDDING

If you are unable to attend this auction, we would be pleased to act as your proxy. Please contact our office at (416) 962-9600 or visit our website for a proxy bid form, terms and additional information.

MEMBER IN GOOD STANDING:



CORPORATE ASSETS INC.

P.O. Box 20071

Portland, Oregon 97294-0071

Presorted
First Class Mail
U.S. Postage
PAID
Eugene, Oregon
Permit No. 305

**CORPORATE
ASSETS INC**

UPCOMING AUCTIONS

Molds Are Us Inc.

Windsor, Ontario, Canada • Tuesday, April 24 • 10:30 A.M.

Express Tool & Mould Ltd.

Oldcastle, Ontario, Canada • Tuesday, April 24 • 2:00 P.M.

Sigama Usinage & Fabrication Ltée

Trois-Rivières, Quebec • Tuesday, May 8 • 9:30 A.M.

**BID, BUY & GO!™
24 Hour Online Auction**

Starting Monday, May 14 • 12:00 Noon

Contact us to consign your surplus equipment at this auction

NHD Group Ltd.

Cambridge, Ontario, Canada
Tuesday, May 15 • 10:30 A.M.