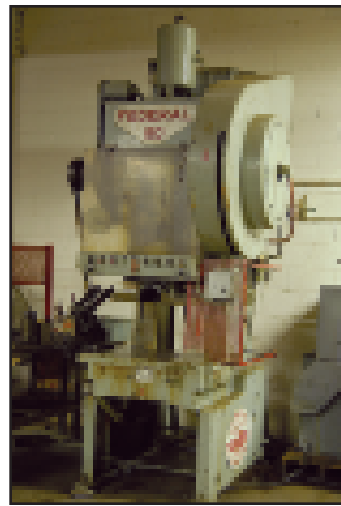
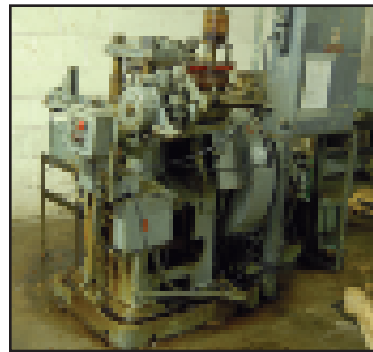


ROUSELLE 60-TON GAP BED PRESS



FEDERAL 60-TON OBI PRESS



HENRY & WRIGHT 25-TON,
4-POST DIEING PRESS



HYSTER ELECTRIC 3,500# LIFT TRUCK



MIMA AUTOMATIC STRETCH WRAPPER



LITTELL COIL REEL



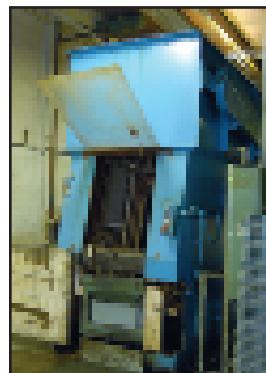
JOHNSON 9" X 18" HORIZONTAL BAND SAW



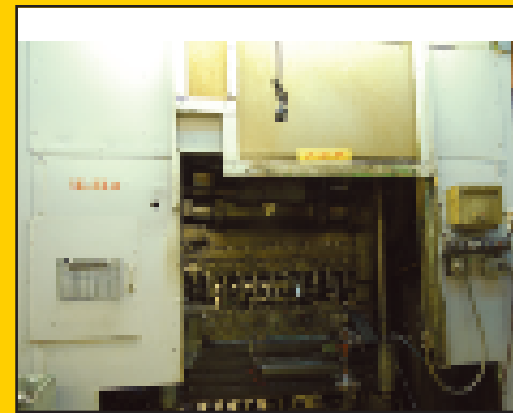
ROTARY PARTS FINISHER



VIDMAR CABINETS FULL OF REPAIR PARTS



BARON BLAKESLEE
PARTS WASHER



WATERBURY & U.S. BAIRD TRANSFER PRESSES



Company Closing **DRAWN METAL PRODUCTS**

6143 West Howard Street in
Niles, Illinois 60714

TUESDAY, MAY 19th
Starting at 10AM

Inspection Day Before 9-4

Auction Conducted By
MYRON BOWLING AUCTIONEERS, INC.
P.O. Box 369, Ross, Ohio 45061



Register at www.bidspotter.com

PRESORTED
FIRST CLASS MAIL
U.S. POSTAGE
PAID
CINCINNATI, OH
PERMIT NO. 926

FIRST CLASS MAIL



**SAMPLE OF PARTS MADE
BY BAIRD & WATERBURY
TRANSFER PRESSES**

DIRECTIONS

From I-294, Exit Touhy Ave.
East (just North of O'Hare
Airport) or from I-94, Exit Touhy
Ave. West. Travel several miles
& turn North onto Caldwell.
Turn East onto Howard Street.
The auction site is on the right.
(10 MINUTES FROM
O'HARE AIRPORT)

LODGING

Days Inn - (800) 329-7466
6450 W. Touhy Ave. 60714

Holiday Inn - (800) 465-4329
5300 W. Touhy Ave. 60077

Best Western - (800) 780-7234
9424 Waukegan Rd. 60053

TERMS & CONDITIONS

Myron Bowling Auctioneers makes every attempt to accurately describe each item in the auction; however, it is possible that a mistake may occur. This is especially important to know if you plan on placing a Proxy Bid or if you plan to bid over the Internet (when available). Please inspect before you bid. Remember, everything will be sold "AS IS, WHERE IS" with absolutely no warranty or guarantee of any kind either written or implied. Occasionally, additional information regarding any and all items being sold, may come to light during the auction and take precedence.

REGISTRATION

All bidders must register immediately upon entering the auction site. If you have a business card, registration takes less than 10 seconds.

PAYMENT & TAXES

Buyers have 3 options regarding payment for items purchased. One is cash. Two is with a company check. Three is by wire transfer. If you are paying with cash or company check, pay when you have finished bidding. If you are using a wire transfer, pickup wire transfer information when you register and have your bank wire the money the day after the auction. Unless you have your tax exempt number with you, we will have to charge sales tax.

**12% BUYER'S PREMIUM FOR ON-SITE BUYERS & 15% BUYER'S PREMIUM ON-LINE
INSPECTION THE DAY BEFORE THE AUCTION FROM 9AM TO 4PM**

REFUNDS

No refunds or adjustments will be made once an item has been removed from the auction site. All refunds and adjustments are solely at the discretion of the auction company.

RIGGING & REMOVAL

RIGGING/REMOVAL IS THE RESPONSIBILITY OF THE BIDDER/BUYER. Small, carryout items, should be removed following the auction or the day after the auction. Anyone, either a buyer or rigger, who uses a powered vehicle to remove anything from the auction site, will need a certificate of insurance. All removal activity must be in accordance with OSHA guidelines and safety standards. REMOVAL MAY BEGIN WHEN THE AUCTION HAS BEEN COMPLETED AND PAYMENT IN FULL HAS BEEN MADE.

Call (513) 738-3311 if you have any questions.

Myron Bowling Auctioneers, Inc. Auction License No. 444-0000274
Auctioneer's License No. 441-000548

PUBLIC AUCTION



1 OF 8 WATERBURY MODEL 15-12 TRANSFER PRESSES

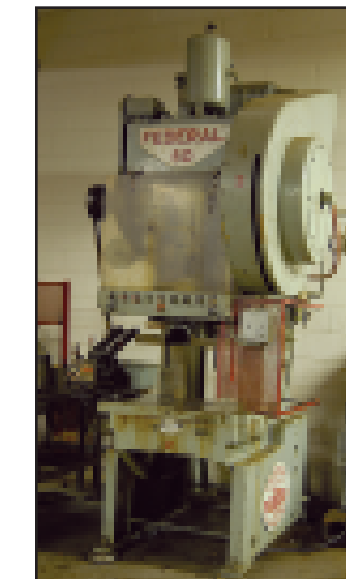
Company Closing **DRAWN METAL PRODUCTS**

6143 West Howard Street in Niles, Illinois 60714

Precision Eyelet / Transfer Press Facility

TUESDAY, MAY 19TH at 10AM

Inspection: Day Before 9-4



FEDERAL 60-TON OBI PRESS



1 OF 5 U. S. BAIRD MODEL 4-37
TRANSFER PRESSES



SAMPLE OF PARTS MADE BY BAIRD & WATERBURY TRANSFER PRESSES



1 OF 3 U. S. BAIRD MODEL 5L-51 TRANSFER PRESSES



1 OF 3 U. S. BAIRD MODEL 3-25 TRANSFER PRESSES

MYRON BOWLING AUCTIONEERS

Post Office Box 369 • Ross, Ohio 45061
(513) 738-3311 • Fax: (513) 738-0221

E-Mail: info@myronbowling.com

Web: www.myronbowling.com

Auction Conducted & Managed By
Myron Bowling Auctioneers, Inc.

In Conjunction With



PERFECTION PLANT LIQUIDATIONS, LLC

1-224-927-5300 Office • 1-224-927-5311 Fax
3100 Dundee Road, Suite 915 • Northbrook, Illinois 60062
www.pplauction.com

Visit www.myronbowling.com for Upcoming Auctions



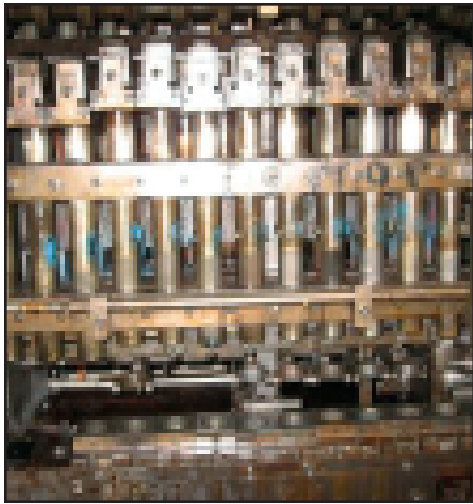
1 OF 8 WATERBURY MODEL 15-12
TRANSFER PRESSES



1 OF 6 WATERBURY MODEL 15-10
TRANSFER PRESSES



1 OF 8 WATERBURY MODEL 15-12
TRANSFER PRESSES



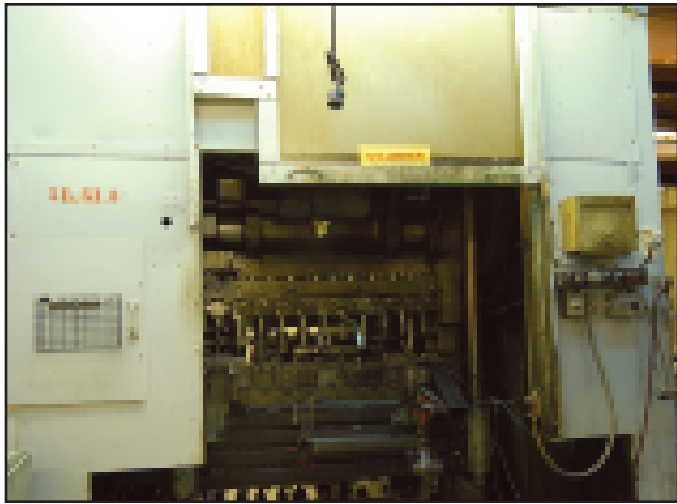
WATERBURY MODEL 15-12 CLOSEUP



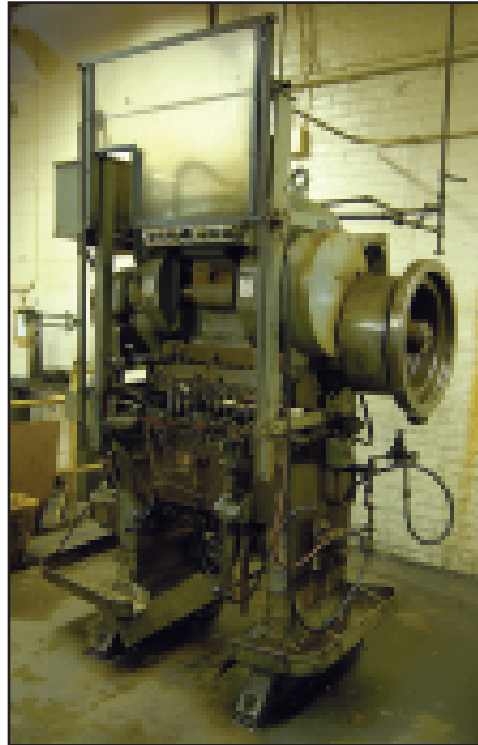
1 OF 3 U. S. BAIRD MODEL 3-25
TRANSFER PRESSES



1 OF 5 U. S. BAIRD MODEL 4-37
TRANSFER PRESSES



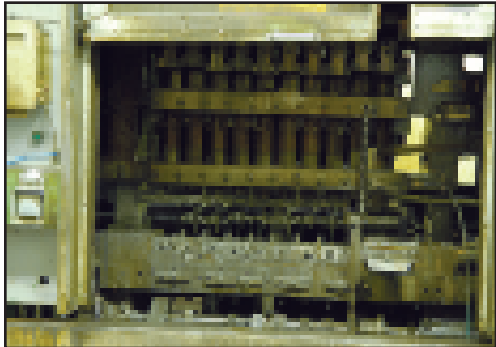
2 OF 3 U. S. BAIRD MODEL 5L-51 TRANSFER PRESSES



1 OF 3 U. S. BAIRD MODEL 3-25
TRANSFER PRESSES



WATERBURY MODEL 10-12 CLOSEUP



WATERBURY MODEL 15-10 CLOSEUP



ROCKWELL HARDNESS
TESTER MODEL 3-OUR

EYELET/TRANSFER PRESSES

(3) U.S. BAIRD Model 5L-51 Long Stroke Transfer Presses, 75-Ton, 7" Stroke, 3.38" Max. Blank, 3" Max. Draw, 40-90 SPM, Air Clutch, Sound Enclosure, Clarktron Cam Control, S/N's 5600-4 (#5L-51-2), 5600-2 (#5L-51-1) & S/N 5600-8 (#5L-51-3)
(5) U.S. BAIRD Model 4-37 Long Stroke Transfer Presses, 45-Ton, 12-Station, 4" Stroke, 2.50" Max. Blank, 1.625" Max. Draw, 60-160 SPM, Air Clutch, Most w/ Sound Enclosure, Clarktron Cam Control, S/N's 3537-32 (#4-37-4), 3537-24 (#4-37-1), 3537-29 (#4-37-3), 3537-26 (#4-37-2) & 6606-18 (4-37-5)

(3) U.S. BAIRD Model 3-25 Long Stroke Transfer Presses, 25-Ton, 11-Station, 3" Stroke, 1.50" Max. Blank, 1.25" Max. Draw, 80-200 SPM, Air Clutch, Clarktron Cam Control, S/N's 4109-133 (#3-25-3) & 4109-123 (#3-25-1)
WATERBURY FARREL Model 20-10 Transfer Press, 11-Station, 4.75" Max. Blank, 3.125" Max. Draw, 35-70 SPM, Air Clutch, Sound Enclosure, Clarktron Cam Control, S/N S14 7705-152091-41 (#20-10)

(8) WATERBURY FARREL Model 15-12 Transfer Presses, 13-Station, 3.25" Max. Blank, 2.125" Max. Draw, Air Clutch, Most w/ Sound Enclosures, Clarktron Cam Control, S/N's ST236674-1-236725 (#15-12-1), ST238042-87-238153 (#15-12-6), ST236872-31-237083 (#15-12-3) & S/N ST236674-2-236725 (#15-12-2), ST237607-80-258052 (15-12-4), SO237607-84-238085 (#15-12-5), 236872-34-237016 (#15-12-8) & ST238926-128-238954 (#15-12-7)

(4) WATERBURY FARREL Model 15-10 Transfer Presses, 11-Station, 2.81" Max. Blank, 1.50" Max. Draw, 45-90 SPM, Air Clutch, S/N's S176928-186-188891 (#15-10-4), 176928-187-188891 (#15-10-3) S74071-80356-73 (#15-10-1), & S159794-146-160827 (#15-10-2)

(2) WATERBURY FARREL Model 15-10 Transfer Presses, 12-Station, 2.81" Max. Blank, 1.50" Max. Draw, 45-90 SPM, Air Clutch, S/N's ST236419-13-236408 (#15-11-1) & ST236866-28-237049 (#15-11-2 - Disassembled for Repair)

(4) WATERBURY FARREL Model 10-12 Transfer Presses, 13-Station, 1.81" Max. Blank, 1.063" Max. Draw, 60-120 SPM, Air Clutch, Sound Enclosure, Clarktron Cam Control, S/N's ST236870-30-237074 (#10-12-1), ST237603-58-238045 (#10-12-3) & ST237603-58-238149 (#10-12-4) ST236870-29-237074 (#10-12-2)

(2) WATERBURY FARREL Model 5-12 Transfer Presses, 13-Station, 1.50" Max. Blank, .813" Max. Draw, 70-140 SPM, Air Clutch, S/N's ST236866-26-237017 (#5-12-1) & ST236866-28-237049 (#5-12-2)

(11) Standard Slides for Presses Located in Presses and Tool Crib
Very Large Assortment of U.S. BAIRD & WATERBURY FARRELL Replacement & Repair Parts

LATHES

(2) CINCINNATI 17" x 46" Hydrashift Geared Head Engine Lathes, Model 17, S/N's 1W3E5R-204 & 1W3E5S-55, Collet Nose, 37-1470 RPM, Carriage, Cross Slide, Threading, Tailstock, Face Plate, Pan Bed
SOUTH BEND 16" x 34" Toolroom Lathe, S/N 13663HKX, Chucks, Collet Nose, Carriage w/Cross Slide, Threading, Pan Bed
(2) SOUTH BEND 16" x 30" Geared Head Toolroom Lathes, Model 400, S/N's 10427 & 10428, 59-1400 RPM, Chuck, Carriage w/Cross Slide, Threading, Pan Bed
(2) SOUTH BEND 14" x 28" Geared Head Toolroom Lathes, Model 14, S/N's 00156TT & 00158TT, Variable Speed, Chuck, Carriage w/Cross Slide, Threading, Pan Bed

SAWS

GROB 18" Vertical Band Saw, Type NS18, S/N 3344, 24" x 24" Tilting Work Table
JOHNSON 9" x 18" Horizontal Band Saw, Model J, S/N J-11919

MILLS

BRIDGEPORT 2-HP Vertical Milling Machine, Series 1, S/N 225367, Variable Speed, 9" x 42" Work Table, Power Feed
(2) BRIDGEPORT 1-HP Vertical Milling Machines, S/N's 105215 & 96010, 80-2720 RPM, 9" x 42" Work Table
BRIDGEPORT 1-HP Vertical Milling Machine, S/N 92140

GRINDERS

COVEL 6" x 18" Hand Feed Surface Grinder, Model 15, S/N 15-1533, 6" x 18" Electromagnetic Chuck
(4) BOYAR SCHULTZ 6" x 12" Hand Feed Surface Grinders, Model H612, 6" x 12" Electro Magnetic Chuck, S/N's 26958, 26969, 26500, 26501
COVEL 5" x 12" OD Hydraulic Cylindrical Grinder, Model 512H, S/N 512H-202, Drop Down Motorized OD Spindle, Coolant
DUMORE Tool Post Grinder, Model L98A, S/N 426

LIFT TRUCK

HYSTER 3,500-lb. Electric Forklift, Model E30XL, S/N C114V02789H, Solid Tires, 130" Lift, 3-Stage Mast, Side Shift, ROPS

INSPECTION

MICRO VU Spectra 14" Optical Comparator, S/N 6541, New 2002, w/Q16 Computer DRO
MICRO VU 14" Optical Comparator, Model H14, S/N 1519, 5" x 18" Work Stage, MD1 DRO
COVEL 14" Optical Comparator, Model 14B, S/N 14B-2379, 6" x 13" Work Stage
CARVER HYDRAULIC Laboratory Press, Model C, S/N 29000-424
WILSON ROCKWELL Hardness Tester, Model 3OUR, S/N 248
MICROFLAT 18" x 24" Black Granite Surface Plate, S/N 63964 w/Stand
Micrometers, Gauges, Surface Plates

MISCELLANEOUS

K.H. HUPPERT Electric Furnace, Model ST, S/N 770
3' x 2-1/2' x 2-1/2' Oil Quench Tank
500-Gallon Rectangular Poly Oil Holding Tank, New 2008
BARON-BLAKESLEE Continuous Rotary Drum Degreaser/Dryer, Model TH-LLV1019, S/N 25214, w/10" Dia. x 19" Dia. Roller Chain Mounted Thru Feed Rotary Parts Baskets, Degreaser Dry Section, Recovery Still

COMPAIR 50-HP Air Cooled Rotary Air Compressor, Model L-37S, S/N 4754/32, New 2002, 177-CFM, 190-PSI, Sound Housing, Delcos 3660 SS Control
INGERSOLL RAND Rotary Air Compressor, Model SSR
8' x 4' Vertical Air Receiver Tank
KEWANEE Model M-45-KG Gas Fired Boiler, S/N R-6251
ROCKWELL DELTA 14" Bench Type Drill Press, Series 15-655, S/N 1726409
SUNNEN Precision Honing Machine, Model MBB-1650, S/N 53495, Accessories, Coolant
SUPER Die Filing Machine, S/N 8251
BUDGIT 1/2-Ton Hoist Running on 80' (Est.) Beam Line
CAROLINA Hydraulic Crane, S/N 3365
Portable Hydraulic Crane

(2) Tumblers
FAIRBANKS MORSE 5,000-lb. Double Bench Floor Pit Scale, S/N G441619 w/4' x 4' Platform
(1) TOLEDO 500-lb. & (2) TOLEDO 125-lb. Portable Platform Scales
TOLEDO Bench Top Counting Scale, S/N 1116
MIMA Rotary Pallet Stretch Wrapper, Model WW200-JT, S/N 02041-12055, 30" Table
BOSTITCH Box Bottomer, Model FC95, S/N FC7118
LITTELL No. 25 Coil Reel, S/N 51109536
(10) LITTELL 600-lb. Motorized Centering Reels
1,000-lbs. Assorted Tool Steel Bar Stock
DELTA 12" Disc Sander
DELTA 6" Double End Grinder
ROCKWELL 6" Double End Grinder, Model 23-105

SOUTH BEND Lathe, Drill, Welder, (12) STANLEY Multi-Drawer Cabinets, Benches, Bench Vises, Die Carts, Tapper, Inspection Equipment, Collets, Speed Lathes, Surface Plates, Die Carts, Brazing Station, Anvil, Motorized Centers, Demagnetizer, Grinding Fixtures, Abrasives, Hone Accessories, Acetylene Torch Set, Benches, Storage Cabinets, Parts Wash Station, Hoists, Shop Carts, Ladders, Pallet Jacks, Shop Fans, Tote Pans



SAMPLE OF PARTS MADE BY
BAIRD & WATERBURY TRANSFER PRESSES



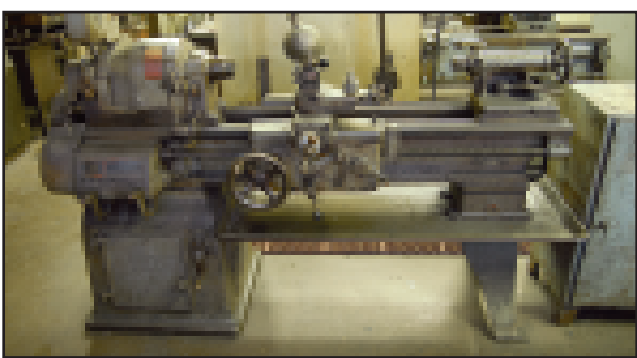
HUPPERT OVEN &
QUENCH TANK



2 OF 3 BRIDGEPORT
1 HP VERTICAL MILLS



SOUTH BEND 16" X 30" TOOLROOM LATHE



SOUTH BEND TOOL ROOM LATHE



1 OF 2 CINCINNATI 17" X 46" ENGINE LATHES



1 OF 2 CINCINNATI 17" X 46" ENGINE LATHES



GROB 18" VERTICAL
BAND SAW



BENCH TOP HAND TAPPER



BRIDGEPORT SERIES 1,
2HP VERTICAL MILL



LITTELL UNCOIL REEL



ASSORTED GRINDER TOOLING