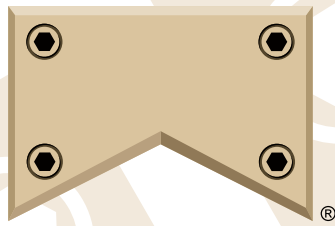


PUBLIC

AUCTION



**CORPORATE
ASSETS INC**

**BID, BUY & GO!™
LIVE WEBCAST**



APPROX. \$14 MILLION REPLACEMENT COST

1995

DANIELI-WEAN 72" complete pickling line (LH) PRODUCTION MACHINERY complete 72" pickling line with in line slitter (RH)

LATE MODEL PICKLING & SLITTING FACILITY VIKING AND WORTHINGTON STEEL ENTERPRISE L.L.C.

AUCTION: Thursday, June 26, 2008 at 10:30 A.M.
804 Steel Drive, Valley City (Cleveland), Ohio 44280 USA



CORPORATE ASSETS INC.
2 St. Clair Ave. W.
Suite 1002
Toronto, Ontario
Canada M4V 1L5
Tel: (416) 962-9600 Fax: (416) 962-9601
Email: info@corpassets.com
Web: www.corpassets.com
Toronto-Montreal-Chicago

For Technical Information Please Contact:



NATIONAL MACHINERY EXCHANGE, INC.
158 Paris St., Newark, New Jersey 07105-3829 USA
Toll Free: (800) 631-4470 Phone: (973) 344-6100 Fax: (973) 589-0944
E-mail: sales@nationalmarchy.com Website: www.nationalmarchy.com
Mr. Bob Dwyer E-mail: bob@nationalmarchy.com

"Let Our Experience Be Your #1 Asset"™

DANIELI-WEAN 72" X .250" Pickling Line

APPROX. \$14 MILLION REPLACEMENT COST

1995



DANIELI-WEAN 72" complete push/pull hydrochloric acid pickling line, capacity; material thickness (min/max).040" / .200" (.250" @ 50 ksi), coil width (min/max) 24" / 72", • coil weight (entry/exit) 80,000 lb., 60,000 lb. exit crane, entry coil ID range 20" to 30", entry coil OD 72", exit coil ID 24", exit coil OD 72", line speed (max) 400 fpm

Consisting of: coil transfer car, prep station peeler, breaker rolls, prep station crop shear, (2) entry coil storage saddles, pit mounted entry coil car, dual stub uncoiler with hold-down roll and scale breaker, peeler and squaring guides, entry pinch rolls &

5 roll flattener, thickness gauge, entry shear, scrap chute, stitcher, degrease section, 4 tray pickle section, steering squeeze roll unit, 5 stage rinse section, rinse dryer, pinch roll stand, looping pit tables, side guides, pinch roll stand, exit crop shear, scrap tub, centering side guides, side trimmer, scrap hoppers, steel belt conveyor, 17 roll leveler, inspection table, exit parting shear, back tension unit, electrostatic oiler, edge guide unit, exit deflector roll, thread table, recoiler w/outboard bearing, 400 HP pit mounted exit coil car, 3 exit coil storage saddles, ALLEN BRADLEY controls



Pickle section

This brochure is only a partial listing. VISIT OUR WEBSITE FOR

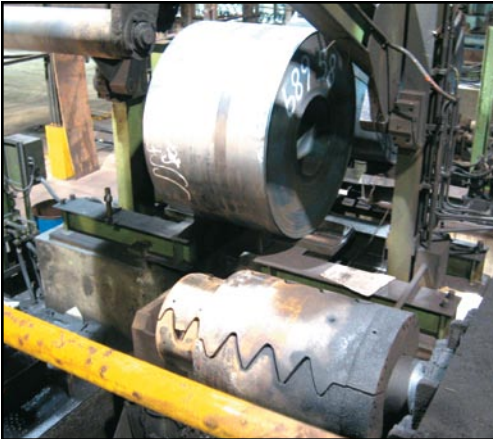
DANIELI-WEAN 72" X .250" Pickling Line



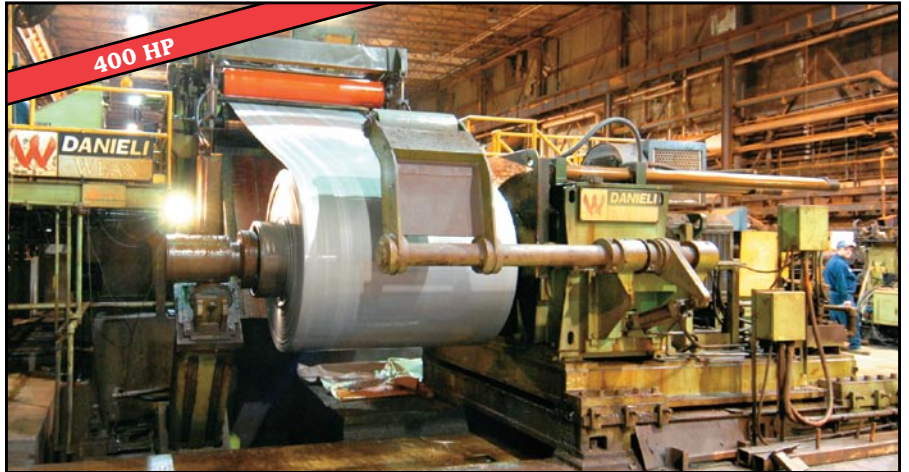
Coil storage saddle



Side guides, pinch roll, steel belt conveyor, 17 roll precision leveler, inspection table, exit parting shear



Entry coil car, uncoiler with hold-down roll and scale breaker



Recoiler with outboard bearing



Control panel



Uncoiler with hold-down roll and scale breaker

3 WAYS TO BID!

1. ATTEND! 2. BID BY WEBCAST! 3. BID BY PROXY!
LIVE WEBCAST BIDDING powered by

BID, BUY & GO!™
LIVE WEBCAST

Register early for this
and other online
webcast auctions!

STAMCO Complete 72" x .250" Slitting Line



4 arm entry turnstile



Uncoiler with hold-down roll, outboard bearing, edge guide unit, peeler, entry pinch rolls 3 roll breaker



Floor mounted entry coil car



Entry crop shear, roller scrap conveyor, traversing slitter head



Looping pit table, dual drag pad tension stand, pinch rolls, exit parting shear, exit deflector roll, thread table

This brochure is only a partial listing. VISIT OUR WEBSITE FOR

STAMCO Complete 72" x .250" Slitting Line



4 arm exit turnstile



Overarm separator, recoiler with outboard bearing



Second traversing slitter head with rotating slitter storage tray



Floor mounted exit coil car



Control panel

STAMCO 1999 complete 72" slitting line, capacity; material thickness (min/max).040" / .250", coil width (min/max) 24" / 72", coil weight (entry/exit) 60,000 lb., entry coil ID range 20" / 24", entry coil OD 72", exit coil ID 20" / 24", exit coil OD 72", line speed (max) 400 / 1000 fpm, line direction right to left

Consisting of: 4 arm turnstile, floor mounted entry coil car, uncoiler with hold-down roll, outboard bearing, edge guide unit, peeler, entry pinch rolls 3 roll breaker, entry crop shear, roller scrap conveyor, side shimless tooling, guides, (2) traversing 11" dia. arbor slitter heads, injector, 300HP, rotating slitter storage tray, setup capstan, scrap choppers, steel belt scrap conveyor, inspection table, looping pit tables, dual drag pad tension stand, separator setup stand, pinch rolls, exit parting shear, exit deflector roll, thread table, overarm separator, recoiler w/outboard bearing, 300HP, jib crane, 4 arm turnstile, stationary downlayer, storage conveyor, banding table, storage conveyor, manual grab stacker

COIL PACKAGING LINES



MONARCH/STAMCO 88-98-25 coil packaging line

MONARCH/STAMCO 1998 188-98-25 coil packaging line with 80,000 lb. max. coil weight, 12" to 74" strip width, .040" to .250" strip gage, 36" to 72" coil OD, 20" to 24" coil ID, consisting of: hydraulic tilt table, 20' power entry conveyor, SIGNODE slit coil strapping station, 25' power exit conveyor, SHAW BOX 7 ½ ton electric hoist, METTLER scale, ZEBRA label printer

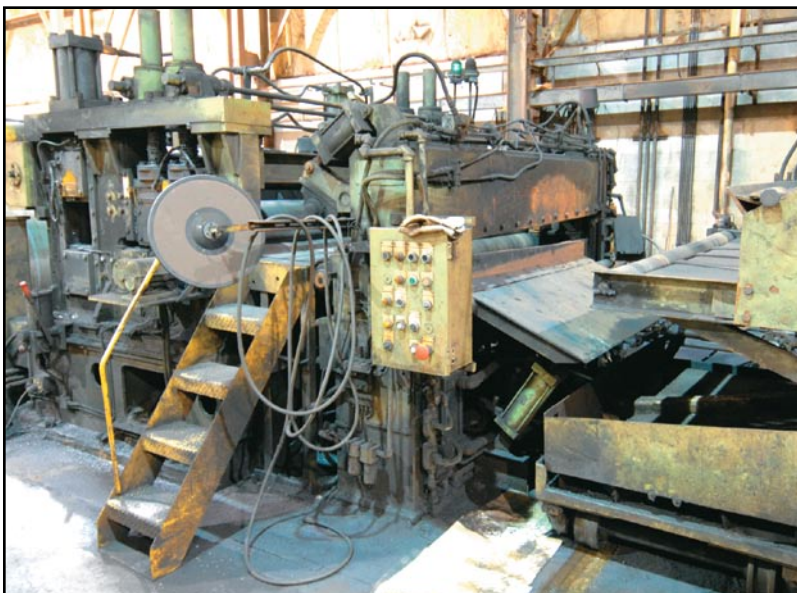
SIGNODE coil packaging line consisting of: hydraulic tilt table, 20' power entry conveyor, SIGNODE slit coil strapping station, 20' power exit conveyor, SHAW BOX 5 ton electric hoist with jib

(3) double end bench grinders, DEWALT abrasive cut off, POWERMATIC drill press, (2) job boxes with tools, assorted lifting accessories

PRODUCTION MACHINERY—Complete 72" Pickling Line With In Line 72" X .600", 60,000 lb., 2 Head Slitter

PRODUCTION MACHINERY complete 72" push/pull hydrochloric acid pickling line with in line slitter, capacity; material thickness (min/max) .060" / .600", coil width (min/max) 12" / 72", coil weight (entry/exit) 60,000 lb., entry coil ID range 20" to 30", entry coil OD 72", exit coil ID 24", exit coil OD 72", line speed (max) 300 fpm, line direction – Left to Right

Consisting of: (2) entry coil storage saddles, pit mounted entry coil car, dual cone uncoiler, peeler and hold-down roll, entry pinch rolls, 5 roll flattener, thickness gauge, pinch rolls, entry crop shear, scrap cart, thread table, side guides, 3 tray pickle section, 4 stage rinse section, rinse dryer, roll coater, coating dryer, tracking pinch rolls, side guides, felt roll oiler, slitter, (2) crane out slitter heads, thread table, (2) scrap winders, steel belt scrap conveyor, side guides, exit parting shear, exit deflector rolls, thread table, edge guide unit, overarm separator, recoiler, pit mounted exit coil car, 4 arm turnstile



Entry pinch rolls, 5 roll flattener, thickness gauge, pinch rolls, entry crop shear, scrap cart, thread table



Dual cone uncoiler, peeler and hold down roll

PRODUCTION MACHINERY—Complete 72" Pickling Line With In Line 72" X .600", 60,000 lb., 2 Head Slitter



3 tray pickle section, 4 stage rinse section



Control panel



Pit mounted exit coil car, 4 arm turnstile

APPRAISAL SERVICES

What's the real value of your equipment? If you require a detailed appraisal for banking, insurance, or internal purposes, consult with the certified experts at Corporate Assets Inc.

- We will appraise one machine or your complete plant
- Going concern, fair market, or liquidation values

We provide appraisal services anywhere in the world for all types of industrial manufacturing and processing equipment. Call us in complete confidence today with your requirements.

Phone: (416) 962-9600

Fax: (416) 962-9601

Email:

appraisals@corpassets.com

Toronto • Montreal • Chicago



Pinch rolls, side guides, slitter, exit deflector rolls, thread table, edge guide unit, overarm separator, recoiler



(1 of 2) crane out slitter heads

brochure is only VISIT OUR WEBSITE FOR MORE DETAILED LISTINGS AND PHOTOS

PAXSON COMPLETE 72" SLITTING LINE



Slitter pinch rolls, slitting head



Floor mounted entry coil car, uncoiler with hold-down roll



Recoiler with overarm separator, floor mounted coil car



Pad tension stand, thread table



Entry pinch rolls, inspection table, entry crop shear, roller scrap conveyor, slitter pinch rolls



SIGNODE slit coil banding line



Second slitter head



2 arm exit turnstile

PAXSON complete 72" slitting line, capacity; material thickness (min/max) - .050" / .375", coil width (min/max) 27" / 72", coil weight (entry/exit) 50,000 lb., entry coil ID range 20" / 24", entry coil OD 72", exit coil ID 20" / 24", exit coil OD 72", line speed (max) 300 fpm, line direction right to left

Consisting of:

3 arm turnstile, floor mounted entry coil car, uncoiler with hold-down roll, peeler, entry pinch rolls, inspection table, entry crop shear, roller scrap conveyor, slitter pinch rolls, 150HP, (2) arbors 9" to 12", side guides, slitter fixed base, (2) crane out slitter heads, scrap choppers, steel belt scrap conveyor, inspection table, looping pit table, drag pad tension stand, thread table, recoiler w/overarm separator, 125HP, floor mounted coil car, 2 arm turnstile, stationary downlayer, storage conveyor, banding table, storage conveyor, manual grab stacker



P&H 30 ton bridge crane



P&H 30 ton bridge crane



P&H 30 ton bridge crane



PROGRESSIVE 30 ton bridge crane



BUSHMAN 40 ton C hook with stand



Coil upender



BUFFALO 105 ton mechanical ironworker



ROYAL ARC 60,000 lb. coil lifter



GROVE AMZ66 snorkel lift

CRANES

P&H 40 ton double girder, top running bridge crane with 100' span, cab operated, s/n 30603

P&H 40 ton double girder, top running bridge crane with 100' span, cab operated, s/n n/a

P&H 30 ton double girder, top running bridge crane with 80' span, cab operated, s/n 25773

P&H 30 ton double girder, top running bridge crane with 80' span, cab operated, s/n 27860

P&H 30 ton double girder, top running bridge crane with 80' span, cab operated, s/n 25772

P&H 30 ton double girder, top running bridge crane with 80' span, cab operated, s/n 27861

PROGRESSIVE 30 ton double girder, top running bridge crane with 80' span, cab operated, s/n n/a

COIL LIFTING EQUIPMENT

(2) BRADLEY 80,000 lb. parallelogram coil lifters with digital scales

(2) ROYAL ARC 60,000 lb. parallelogram coil lifter

(3) BUSHMAN 60,000 lb. C-hook with stand

(2) BUSHMAN 80,000 lb. C-hook with stand



CLARK 9,000 lb. forklift LPG



CLEAVER BROOKS
gas fired boilers



ZEKS air dryer



LEROI & WORTHINGTON 150 HP rotary screw water cooled air compressors s/n 4200X93

FACTORY EQUIPMENT

GROVE AMZ66 snorkel lift with 500 lb. cap., 66' reach

HYSTER S155XL2 LPG forklift with 14,000 lb. cap., 133" vertical lift, side shift

CLARK GOX50 LPG forklift with 9,000 lb. cap., 139" vertical lift, s/n GX7100-00929308FB

CATERPILLAR CC25 LPG forklift with 4,700 lb. cap., s/n MLM4958

LEROI WE 150 SS II 150 HP rotary screw water cooled air compressor, s/n 4200X93

WORTHINGTON ROLLAIR 150 150 HP rotary screw water cooled air compressor, s/n 345291

ZEKS 800HSCA400 air dryer

(3) **CLEAVER BROOKS** 1977 CB200-1755 7.3 million BTU gas fired boilers, s/n I-64056, I-64057, I-64058

(2) **CLEAVER BROOKS** 1995 CB700-202 8.3 million BTU gas fired boilers, s/n L94116, L94115

(6) **BLENDING TANK TECHNOLOGIES** 1998 CI 20,000 gallon resin derakane blending tanks

DURIRON 40" X 40" X 2" filter press with 65 screens, 14' opening

SHAW BOX 5 ton electric hoist

(2) **LINCOLN** IDEAL ARC 250 stick welders, s/n n/a

LINCOLN SP125 PLUS stick welder, s/n n/a

THERMAL DYNAMICS CUTMASTER 51 plasma cutter, s/n 02784697

RIDGID 535 power threader, s/n EAM22476C01

SIMPLEX 100 ton hydraulic shop press with power pack

BUFFALO 2 1/2 105 ton mechanical ironworker with 24" throat, s/n 75Y3096

CARDINAL 135 ton X 60' ((4) 15' sections), truck scale, s/n 3068913

LARGE ASSORTMENT OF SLITTING KNIVES & SPACERS

PROXY BIDDING

If you are unable to attend this auction, we would be pleased to act as your proxy. Please contact our office at (416) 962-9600 or visit our website for a proxy bid form, terms and additional information.

UPCOMING AUCTIONS

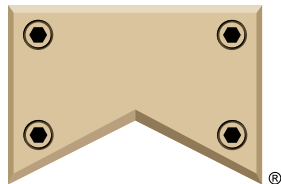
ADVANCE MOLDS
Modern Mold Making Facility
Thursday, July 10 • Oldcastle, ON, Canada

LIVE ONSITE!
RED, BUY & GO!
LIVE-WEBCAST

AMERICAN MOLD TECHNOLOGIES
Large Capacity CNC Mold Facility
Tuesday, July 15 • Harrison Township, MI, USA

LIVE ONSITE!
RED, BUY & GO!
LIVE-WEBCAST

MEMBER IN
GOOD STANDING:



**CORPORATE
ASSETS INC**

CORPORATE ASSETS INC.

P.O. Box 20071
Portland, Oregon 97294-0071

Presorted
First Class Mail
U.S. Postage
PAID
Eugene, Oregon
Permit No. 305

INSPECTION

Wednesday, June 25th, 2008, 9:00 A.M.
to 5:00 P.M. and morning of auction day.

REMOVAL

Small items by Friday, June 27th by 5:00 P.M.
Remaining items by Friday, July 25th by
5:00 P.M.

PAYMENT

Please visit our website at www.corpassets.com
A Buyer's Premium will apply at this sale.

Now

Accepting



Visit our website for specific terms and conditions.

DIRECTIONS

Please visit our website at
www.corpassets.com, click on UPCOMING
AUCTIONS: VIKING AND WORTHINGTON STEEL
ENTERPRISE details button, click on MAP tab
and get directions by accessing the pop-up
address info box.

ACCOMMODATIONS & CAR RENTALS

Please visit our website for details at
www.corpassets.com

TERMS

Corporate Assets Inc. assumes no liability for
errors or omissions in this brochure.

Corporate Assets Inc. expressly reserves the
right to determine the manner of conducting
the auction as it may deem appropriate.

All subject to prior sale.

LICENSE Nos.

Ohio Lic. Nos.: CAI 63-98-76949,
RH 62-99-77249, JS 2002000001

AUCTION CONDUCTED BY CORPORATE ASSETS INC.

For further information contact us at:
2 St. Clair Ave. W., Suite 1002
Toronto, Ontario, Canada M4V 1L5

Tel: (416) 962-9600 • Fax: (416) 962-9601

Email: info@corpassets.com

Web: www.corpassets.com

Toronto • Montreal • Chicago