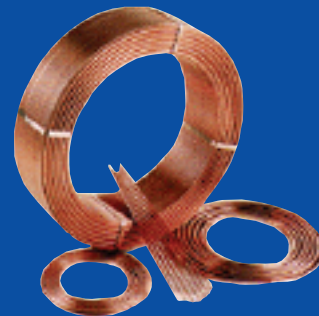


LIQUIDATION FROM COPPER TUBE MANUFACTURER Surplus To The Ongoing Operations Of Wolverine Tube - ACR Copper Tube Plant



Featuring: (4) Mori Machinery ACR Copper Tube Mills
(1) Otto Junker Furnace • (4) Poongsan Level Wind Lines
(2) Induction In-Line Annealers



NATIONAL MACHINERY EXCHANGE, INC.

If it's machinery, we have it SM

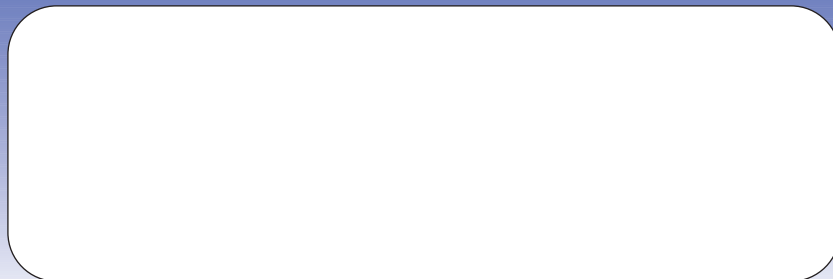
72 Roanoke Avenue
Newark, New Jersey 07105
www.nationalmachy.com

Presorted Standard
U.S. POSTAGE

PAID

Langhorne, PA
Permit No. 81

ROUTE TO: ☐ Plant Manager
☐ Shop Superintendent
☐ Purchasing
☐ Manufacturing Engineer



Surplus To The Ongoing Operations Of Wolverine Tube

(1) of (4)
Mori Machinery
Copper Tube Mills

OTTO
Junker
Type RHO
Roller
Hearth
Annealing
Furnace



LIQUIDATION IN PROGRESS

Plus... (4) Poongsan Level Wind Lines
(2) Induction In-Line Annealers
... **ALL IMMEDIATELY AVAILABLE**



In Canada, contact:
Corporate Assets Inc.
phone: 416.962.9600
fax: 416.962.9601
Email: info@corpassets.com



NATIONAL MACHINERY EXCHANGE, INC.

If it's machinery, we have it SM

72 Roanoke Avenue • Newark, New Jersey 07105

PHONE: (973) 344-6100 • (800) 631-4470
FAX: (973) 589-0944

E-MAIL: brian@nationalmachy.com
WEBSITE: www.nationalmachy.com

LIQUIDATION: Surplus To The Ongoing Operati

Mori Copper Welded Tube Line



View of Entry Section



Accumulator Section



Rolling Mills Section

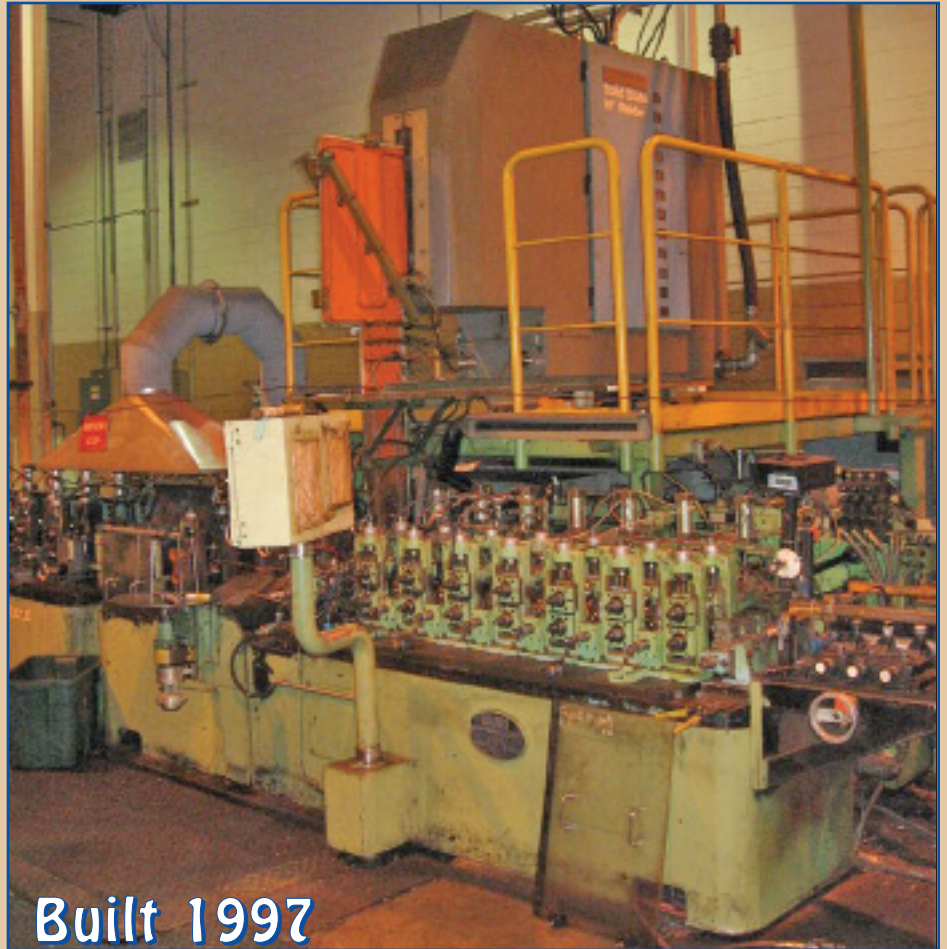


View of Forming Section

(1) of (4)
**Mori
Machinery
Copper
Welded
Tube Mills**

Strip Thickness:
**0.25mm
to .7mm**

Tube Diameter:
**7mm x
15.88mm**



Built 1997

- Material: Copper (C12200)
- Strip Coil ID: 400mm
- HF Welder: 150 Kw / 600 kHz
- Speed: 170 meters/minute
- Includes: Strip Handler (Coil & Manipulator Arm), Strip Decoiler, Looper, Accumulator (by Marol), Embossing Stands, Forming Stands (by Mori), Thermatool Weld Unit, Weidenbach T5562001 Tube Marker and Payoff to Receiving Basket
- Strip Width: 20mm
- Strip Coil OD: 1,500mm
- Rafted for Quick Change



View of Welding Section



View of Sizing Section



View of Cutoff Section

In Canada, contact: **Corporate Assets Inc.**
2 St Clair Ave. W., Suite 1002
Toronto, Ontario
Canada M4V 1L5



phone: 416.962.9600
fax: 416.962.9601
Email: info@corpassets.com



NATIONAL MACHINERY EXCHANGE, INC.

If it's machinery, we have it SM

72 Roanoke Avenue • Newark, New Jersey 07105

ons Of Wolverine Tube - ACR Copper Tube Plant

Otto Junker Type RHO Roller Hearth Annealing Furnace

Material: DHP Copper Tube

*Used for C12200 Level Wound Coils

Technical Data:

Tube Dimensions: Outside Dia. - 6.35mm – 15.88mm
Wall Thickness - 0.25mm – 0.7mm

Coiled Tube Dimensions: 1,200mm (max)

Outside Diameter: 610mm

Inside Diameter: 320mm (max)

Height: 380kg (max)

Product Temperature: 600° C (max)

Charge Trays:

Number of Coils per Stack: 5 Off

Max Charge Weight per Stack at 600° C: 1,650 kg

Tray Dimensions: 1,400mm W x 1,400mm L

Furnace Plant (Approximate Dimensions):

Useful Width of Conveying Rollers: 1,450mm

Clear Passage Height: 2.350mm

Inside Furnace Width: 1,640mm

Inside Furnace Height: 2,450mm (above roller)

Heated Furnace Length: 9.450mm

Passline: 845mm (shop floor to top of conveyor rollers)

Dimensions of Furnace:

Vestibule: 3,500mm Wide

7,000mm High (with superstructures)

12,210mm Long

Length of Loading Roller Track: 4,812mm

Length of Extry Exhaust Hood: 990mm

Length of Vacuum Chamber at Entry End: 1,520mm

Length of Vestibule: 1,810mm

Length of Furnace: 10,290mm

Length of Cooling Zone: 13,648mm

Length of Vacuum at Cooling Zone Exit: 1,520mm

Length of Unloading Roller Track: 4,771mm

Overall Length of Line: 39,446mm



Furnace Wall Temperature: 650° C (max)

Temperature Control: Fully Automatic

(4) Independent Control Zones

Max Total Gas Source for Heating: 95Nm³/hr

Natural Gas w/Net Calorific Value of 37 26 MJ/m³

Electrical Data:

Connected Load: 410 kw

Mains: 460 V, 3 ph, 60 Hz

Control Voltage: 100 V, 3 ph, 60 Hz

PLC-I/O Level: 24 V DC

Instrument/Valve Voltage: 24 V DC

Burner Control Units & Gas Valves: 110 V, 3 ph, 60 Hz

Cubicle Lighting: 110 V, 3 ph, 60 Hz

Cooling Water:

Primary Circuit (Furnace Circuit): Max Water Input
with a Temperature Difference of 10° C
between Supply & Return Water (25° C – 35° C)
– 65m³/hr

(4) Poongsan Level Wind Lines

**Poongsan
Machinery
Level
Winders**

*N2 Required

1 of 4 Available



- Tube OD: 6mm min. to 22.2mm max.
- Tube Wall: 0.35mm min. to 1.0mm max.
- Coil ID: 610mm
- Coil Height: 250mm
- 400 Meters/min
- Coil OD: 1200mm
- 150 kg
- 6-22 SCF/min

(2) In-Line Induction Annealers

**Induction Annealer
and CBC**

- 700 ft/min.
- Heat Zone with complete electrics
- Dwell Zone

*Requires 2 SCF/min
N2 @ 2mm H2O



- Cooling Zone with recirculating cooling water tank, piping, and pumps
- The Pullout (drive), spray marker for eddy current defects
- Nitrogen and Water Piping on Machine
- All Control Cabinets (1 of 2 Available)

CONTACT: BRIAN EPSTEIN

PHONE: (973) 344-6100 • TOLL FREE: (800) 631-4470 • FAX: (973) 589-0944
E-MAIL: brian@nationalmachy.com • WEBSITE: www.nationalmachy.com



NATIONAL MACHINERY EXCHANGE, INC.

If it's machinery, we have it SM

72 Roanoke Avenue • Newark, New Jersey 07105

PHONE: (973) 344-6100 • (800) 631-4470

FAX: (973) 589-0944

E-MAIL: sales@nationalmachy.com

WEBSITE: www.nationalmachy.com

**ARE YOU THINKING OF SELLING
MACHINERY IN YOUR PLANT OR
FACTORY?**

**CALL NATIONAL MACHINERY
TODAY TO GET AN UP FRONT
VALUE OF YOUR MACHINERY.**

**WE ARE INTERESTED IN BUYING
YOUR INDIVIDUAL MACHINES
OR ENTIRE PLANT!**



National Machinery Exchange, Inc. has been the **worldwide leader** in used metalworking equipment since 1934! National Machinery Exchange specializes in purchasing and reselling secondhand ferrous and non-ferrous metalworking equipment. We purchase individual equipment and entire manufacturing plants.

National Machinery Exchange has one of the largest inventories of presses, shears, press brakes, tube & pipe mills, tube end finishing equipment, uncoilers/recoilers, slitting lines, cut-to-length lines, roll formers, rolling mills and much more. We are also the foremost dealer for fastener machinery with a large stock of headers, boltmakers, upsetters, nut formers, nail makers, bolt threaders, thread rollers, slotters, forging equipment, and wire machinery.

National Machinery Exchange is a worldwide dealer with headquarters in Newark, New Jersey and locations in England and Spain. In addition, we have a strong presence in South America, Europe and the Pacific Rim with agents in Mexico, Italy, Korea and Japan. We have multilingual specialists on staff to help you sell or purchase metalworking equipment.

If you are thinking of selling your secondhand metalworking equipment, call National Machinery Exchange today! We have purchased and sold over 100,000 machines and participated in hundreds of plant liquidations and auctions. We can provide appraisal services, evaluate resale market potential and use our international staff to sell your equipment around the globe. We can achieve the sale of surplus equipment through direct purchase, consignment, liquidation and/or auctions.

National Machinery Exchange also specializes in appraisals of used metalworking machinery. Our personnel understand the current trends in the marketplace to accurately value machinery. Our rich history and industry expertise makes National Machinery Exchange your ideal selection for accurate and valuable machinery appraisals.

In addition, National Machinery Exchange has full-time logistics coordinators on staff to help with all rigging needs and quotations. We can also pick you up at the airport and take you to any of our warehouses.

If you need machinery call National Machinery Exchange today!

If you want to sell machinery call National Machinery Exchange today!

If it's machinery, we have it SM

PHONE: (800) 631-4470 • WEBSITE: www.nationalmachy.com