

NATIONAL MACHINERY EXCHANGE, INC.

EL LÍDER EN MAQUINARIA USADA DESDE 1934



158 PARIS STREET, NEWARK, NEW JERSEY 07105 USA
TELÉFONOS +1.973.344.6100 – FAX +1.973.589.0944
GRATIS DESDE MÉXICO 001.800.351.5394
WWW.NATIONALMACHY.COM • SALES@NATIONALMACHY.COM
PARA MAS INFORMACION CONTACTE RAY@NATIONALMACHY.COM



NATIONAL MACHINERY EXCHANGE, INC.

AFILADORAS DE RESORTES / Spring Grinders

- J.M,18/46T, 2 St, Dble End Opp Vert, 18" Dia Wheel; Stk. 107199
- Besley #905, 18" Dia Wheels, 30" Dia Table; Stk. 107196
- Torrington #W-3002 Spring Torsion Winder; Stk. 108384
- Torrington #W3001 Spring Torsion Winder, Dia. .030" - .08; Stk. 108383
- Cincinnati #DBC-5360-XLO Centerless Grinder, 6" Wheel Face, Stk # 109224



109224



108653

AGUZADORAS / Pointers

- 1/4" Hartford #5-700 High Speed Point Former, Shank Lg. 2"; Stk. 108918
- 3/8" Hartford #6-600 High Speed Pointer, Blnk Lg. 4", 600 Ppm; Stk. 108917
- Economy Double End Pointer, Part Dia 1-1/2", Tooling Dia 2-1/4"; Stk. 108571

ALIMENTADORAS Y ENDEREZADORAS PARA PRENSAS / Press, Feed and Straightening Equipment

- Littell # 90-36 32" Press Feed Line; Stk. 108536
- SESCO, 36" X .080" X 10000#, '77, Mandrel Unc, 7roll Str, 4" Dia X 37" W; Stk. 103617
- 60" x .172" x 50,000 Lbs Herr-Voss Press Feed Equipment; Stk. 108498



108498



108810

BANCOS Y BLOQUES DE ESTIRADO / Drawers & Bullblocks

- Vaughn #12-22, 26" Dia Blk, 8" Face, Approx. Start 5/8", 75/100 Hp; Stk. 69332
- Vaughn #19-SD, Approx 1" Dia Low Carb Steel, 22" Dia Sing; Stk. 104624
- Vaughn #22, Cap 1-1/8", Blk 36" x 12", Push Up Sgle Deck; Stk. 105103
- Vaughn #22SD Bullblock; Stk. 108732
- Wirematic, 30" Dia Block-Vert., W/75 HP 3/60/220-440 Motor; Stk. 68950
- Machee, #5SDBB2250 5hp D, Sabina Controls, Die Pull 1100 #; Stk. 108175
- Fastener Eng. #DTH-190-300-28, 7.5hp, 230/460v, 3ph, 60 Cyc; Stk. 107087
- Fastener Eng. #PJH1520-850-36, 15hp, 230v, 3ph, 60 Cyc; Stk. 107071
- Vaughn, #24SD, 30" Diameter Block, Five-Roll Horizontal Straight; Stk. 64142
- Krupp Type Mzk-500, 1961, Mounting Top 19.7", Range .157"-; Stk. 53860
- Vaughn 1/2" # 4hrx, Finish Block Dia. 30"/36", Drawing Spd 666/16; Stk. 108251
- Rmg #1011-2565-73 Drawer, Fpm 65, Capstan 44", Max Wire Dia; Stk. 108987
- Morgan Henrich M #18WR-21, (4) 9-Step Drawing Cone; Stk. 64025
- Syncro # A16-SY392, Wire.05082"(#16 B&S), Fin.01003"(#30)-.00; Stk. 101538
- S.A.M.P. MS.120 Cont. Wire Drawg-Annealing & Spooling, 21-Die; Stk. 103944
- Herborn, 19 Die, 4 Cone Blck, 17% Draft, 8-1/2" Traverse, .009"; Stk. 105322
- Herborn, 13 Die, Coil Block, 10" Shaft Sp., 6" Traverse, .040 Dia.H; Stk. 105316
- RMG #910-40127 Wire Drawer, Capstan Dia. 36" x 8" Wide Face, 127 FPM, Stk. 108810

BANCOS DE TREFILADO DE BARRAS, TUBOS Y PERFILES / Draw Benches

- 12000# Aetna Standard 3 Die Tube Drawbench; Stk. 109432
- 15000# Palmer Single Die Drawbench; Stk. 109434
- 20000# Aetna Standard Drawbench; Stk. 109106
- 50000# Aetna Standard Drawbench; Stk. 109103
- 100000# Aetna Standard Drawbench; Stk. 109104
- 200000# Aetna Standard Drawbench, Single Chain/Draw; Stk. 109102

BOBINADORAS / Coil Winders

- Custom Design Level Wind Coil Line; Stk. 109302

- Itam Left Hand Level Coil Winding System; Stk. 109288
- Morgan Level Coil Winding System, Right Hand, Spd 1500-Fpm; Stk. 109125

CARROS PORTAROLLOS DE LAMINAS / Coil Cars

- 40000# Bradley Power Spread/Power Rotate Coil Grab Attach; Stk. 108534
- 72" X 40,000 # Dahlstrom Coil Car, Coil Capacity - 40,000 #, Coil; Stk. 108996
- 1200#, Rowe, # 810-PR, 1969, Max. Coil Width 10"; Max. Coil; Stk. 103067
- Press Room Equipment #LCC-210-TDR, Max W 10", Max OD 40"; Stk. 108808
- 2500#, Perfecto, # 54-10cc, 10" Width; Stk. 64874
- 5000#, Littell, 40" Dia. X 16" W, Equip 5 Hp Vari Drive Chain; Stk. 60117
- 8000#, Rowe #8020j, Max Coil: 50" OD, 24" Width; Stk. 63278
- 2000#, Littell, # 20-12, 40" O.D., 12" Coil Width, 1 Hp Moto; Stk. 101926
- 6000# Littell #620d-Spd, Coil: 20" Wide, 52" Dia; Str: 2 Ea Entry/Exit; Stk. 104617
- 6000# Littell #C-60, Md Cradle 2-Rolls, Max 15" Wide, 1 Entry/1; Stk. 104996
- 8000#, Littell, # G680-40, 1951, Max Outside Dia 48" / Max Width; Stk. 62328
- 10,000#, Regal #3277-Cc-Csf-48, Coil 48"W, Pwr Adj Coil Side; Stk. 103553

CIZALLAS DE CORTE LONGITUDINAL / Slitters

- Waterbury-Farrel, #2, 15 Hp 220/440 Volt Motor; Stk. 57795
- Waterbury-Farrel, 2-3/8" Arbor Dia X 13" Face, Entry Edge Guide; Stk. 101175
- Production Machinery, 72" X 11" Dia. Arbor Slitter Heads; Stk. 109526

CIZALLAS GUILLOTINA PARA LAMINAS / Shears

- 10 Ga. X 120", Wysong #1010HD, 14 Ga Ss Cap, Stk. 108184
- 12 Ga. X 4' Cincinnati, # 1004-RA, 58" Sq. Arm; Stk. 108533
- 16 Ga. X 48", Niagara #148CD, 18" Back Ge, 2-26" Ext Arms, 36"; Stk. 107993
- 16" Ga. X 60" Niagara, Max. Feed Wd 50", Max Feed Lg. 38"; Stk. 107913
- 10 Ga. X 10' Rousselle, #CEL 303, Hyd. 24" Range, 12' Sq. Arm; Stk. 107868
- 14 Ga. X 48", Gary 5314 SP-48, Power Shear; Stk. 108950
- 3/16" X 4', Lodge & Shipley #0304-SL, Thr. 18-1/2", Dbh 4'4", Sp; Stk. 108210
- 3/16" X 10', Lodge & Shipley #S-0310-AB, Thr. 18-1/2", Dbh 10'4"; Stk. 108211
- 1/4" X 10', Cincinnati #2CC10, Bed 10'7"L, Thr. 3-3/4", Wbh 10'3"; Stk. 107690
- 3/8" X 12', Lodge & Shipley #0612SI, Bet Hous 13'4", Thr 18", (2) 9"; Stk. 106648
- 1/2" X 12', Niagara #1012 Power Squaring, Cap S.S. 3/8", 25; Stk. 108552
- 135" X 10' Accurshear #813510 Hydraulic, Bed 136", Wbu 132; Stk. 108733
- 40' X 3/16" Stamco # 3049, Mild Steel, Blade Lg. 4'6", Air; Stk. 107437
- 3/8" X 6', Pacific #375S6ARL, Power Back Guage, Ball Table, 18" T; Stk. 104035
- 3/8" X 8', Pacific, #375S8, 1959, 8' Mild Steel, 9 Holddowns, Wb; Stk. 102335
- 3/4" X 10', Pacific #750HD10 Hydraulic, Sq. Arm; Stk. 100055
- 10' X 3/16" Amada #M-3045, Power Squaring, 0.177" Mild Stee; Stk. 108653
- 1/4" X 10', Cincinnati 1810G, 1995, Cut Lg. 10'2", Spm 60, Gap De Stk. 108617

CIZALLAS PARA BARRAS Y TOCHOS / Shears, Bar & Billet

- 3-3/8" Rd., Buffalo, # 9, 3" Squ, 10" X 11" Or 6" X 1-1/2" Flats, 9-3; Stk. 69300
- 1300 Ton Buffalo # 1300, 1966, Bar & Billet Shear; Stk. 109305
- William & White Eccentric Geared "C" Frame, Bd 36" X 26", Air Cl & B; Stk. 57121



108184



108210

CIZALLAS ROTATORIAS / Shears, Rotary

- 10 Ga. Niagara, # 31RC, Circle: Min/Max- Sq. Dia. 6-60; Oct. 6-7; Stk. 105755
- 3/8" Cap. Quickwork #34-A, 40" Throat. 2 Hp Ac 3/220/440v, 1951; Stk. 101709
- 3/4" Cap, Kling #750, 3/4" Sq Level Edges, 51" Thr, Speeds 5-10; Stk. 102151
- 3/8" Blue Valley #60, 10 Hp Motor With Controls; Stk. 108069
- Kling #250, Shear Sq. 1/4", Flang. Thick 3/16", Dep. 1-1/4", Long; Stk. 106965
- Kling #250, 1/4" Max Cap, Flanges 3/16" Thk 1/4" Depth, 36" Thr, 8; Stk. 105877
- Quickwork-Whiting #40A, 1/2" Ms Max, 48" Thr, Cut Spd 5-10 Fpm; Stk. 101789

DOBLADORAS DE ALAMBRES / Wire Machinery, Benders

- Hufford Vari Speed And Force, 48-3/4" Dia Pin Holes, Table Size; Stk. 69423
- Lubow 4-Sab Four-Head Frame Bender; Stk. 108899

Visite nuestras oficinas y almacenes
para inspeccionar maquinaria de calidad



- Lubow #ML-10, Rotary Bender, 1/4"Cap; Stk. 108964
- Lubow #WBR-1 Wire Angle Bender, Dimensions 2'w X 6'1, Foot; Stk. 108833
- Wafios #VDUB-20, Wire 50 Ton/Sq In .0590"-.1772" .05; Stk. 53890

DOBLADORAS DE BARRAS O TUBOS / Benders, Pipe, Tube & Bar

- 1 1/2", Pines, #5t, Dial-A-Bend, 1" Tooling, 20 Hp, 230/460 V; Stk. 101901
- 2-1/4"X.065" Pines 25t Vertical Tube Bender, Cap. Mild Steel; Stk. 108977
- 3" EaTon Leonard Vector-Bend Cnc Hydraulic Tube Bender; Stk. 109098
- 2550mm X 4.5mm Lvd Stripit 4,5-25, Hyd Folding Machine; Stk. 109285
- Pines #3t Tube Bender, Tube Size Range OD Up To 1"; Stk. 109051
- Alba #DAR 35EP Rotary Bender, Cap. 6-35mm (1/4"-1-3/8") Bar; Stk. 109478
- Lubow Hydraulic Bender, Hyd. Stroke 8", Work Ht. 40"; Stk. 109221
- Pines #MC-1400 Tube Bender, Madrel Lg. 72", Radios 8" Max; Stk. 109222

DOBLADORAS Y PLEGADORAS DE LAMINAS / Benders, Wire

- 16 Ga. X 8', Chicago D&K #4 Apron Brake; Stk. 108970
- 16 Ga. X 35 Ton, Dreis & Krump, # 338, Bed 8, Runs Go OD; Stk. 63284 1
- 75 Ton X 8', Promecam #Rg-75-25, Hyd,99"Bed/Ram,85"Bet Hsg; Stk. 100030
- 110 Ton, LVD #110JS10 Hydraulic Press Brake, Dbh 100", Thr. 8", St; Stk. 109027
- 50/75 Ton, Chicago #810C, 10 X 11ga, Die Surface 10' Throat 8"; Stk. 107151
- 75 Ton, Dreis & Krump #68C, 8'x10ga, 8'oa, 6'6"Bh, 5hp, 1967, In; Stk. 102492
- 135/65 Ton, Cincinnati, 5 Series X 6', 4" Str, 8-1/4" Thr, Mech.; Stk. 62801
- 150 Ton, Chicago, #1012-R, Cap. 12' X 3/16", 3" Str., 5" Ram A; Stk. 108542
- 225 Ton, Cincinnati Series 9, 3" Str,5" Pwr,8" Thr,10'6"Dbh,12"Ds; Stk. 105979
- 260 Ton, Niagara # N-260-8-12, 4" Str, 6" Max Adj, 12" Depth Of T; Stk. 102023
- 400 Ton, Cincinnati #13, Mech., 4"Str, 14"Sh, Dist. Bet. Hsg 16'6; Stk. 101990
- Diacro #75-10 Hydra-Mechanical Press Brake, 8" Thr., 10' Standard; Stk. 109025
- Carbide #9851 Finger Brake; Stk. 108962

DESBASTADORAS / Trimmers

- Herlan #TB-12-1, Conveyor Motor & Grinder Wheel, With Motor; Stk. 104106
- 150 Ton, # (Hartup Tool) #3A-1/4-20 4-Post, Sh 5.88"-15.62"; Stk. 54621 1



109025



106078

DESEENROLLADORAS DE LAMINAS Y ALAMBRES / Uncoilers

- 1000#, American Steel #60 Payoff Reel, W/Keepers, Manual Leaf A; Stk. 101849
- 2500# American Steel Line #70, Dbl End, Fwd/Rev Op., 60" M; Stk. 106078
- 2500# Georg #HSP12/900,Coil 14-16",Blk Face 9.75",Bk Plate 48"; Stk. 106511
- 4000#, Littell #40-12 Uncoiler, Min-MaxID 15"-20", Max OD 60"; Stk. 108529
- 6000#, American, # 60, 1984, Uncoiler; Stk. 109520
- 6000#, Littell, #60-30, Uncoiler; Stk. 109522
- 6000#, Regal, #18SPR-ACB Uncoiler / Payoff; Stk. 109519
- 10000#, Perfecto #RS10-30B Uncoiler W/Coil Car #LC-IH, Coil; Stk. 103494
- 12000#, Tishken #HXR-30,Max OD 48",MiniD 18",MaxID 24",Mandre; Stk. 62385

EMPACADORAS DE CHATARRA METALICA / Balers, Scrap Metal

- 15" X 30" Mac # #1850 Automatic Scrap Metal Baler; Stk. 108904
- 60" W X 50" X 172" L Harris Press & Shear Baler, Copper Scrap; Stk. 109099

ENCABEZADORAS EN FRIO / Headers, Cold

- 1/8", Omega #0, Dssd, Dia 3.5 Mm .137",Sh 25 Mm 1" Lg; Stk. 53789
- 1/8" Waterbury-Farrel #0 Tub.Rivet, 2die 4blow, 1968, 5/8" Max Sh; Stk. 62030
- 1/8", Waterbury-Farrel, # 0, 1" Max Shank Length, 1-1/2", 150 P; Stk. 65151
- 1/8", Waterbury-Farrel #0 DSSD,2die 4bl, Max:Sh 5/8",Cutoff 1-1/4"; Stk. 103197
- 3/16", National, Dssd, 1" Max Shank Lg, 1-3/4" Max C/O Lg, 200 Pp; Stk. 103874
- 3/16" Waterbury-Farrel"Hipro" Hipro Cold Header, Shnk Lg. 1", Co; Stk. 108907
- 1/4", National D S S D, Max" Shank Length 1-3/8", C.O. Length 2-3; Stk. 105084
- 7/16" National-Formax #FX 32m, 2-Die 2-Blow, 300Ppm; Stk. 109504
- 5/16" Waterbury Hipro, Max Shank Lg. 1-1/2", Max Lg C/O 2-5/8"; Stk. 107598
- 5/16", National, # 56 2 Die 3 Blow Cold Header; Stk. 109412

- 1/2", National, # 89 2 Die 3 Blow Cold Header; Stk. 109414
- 5/8", National #1012, 2 Die 3 Blow Cold Header, 75 Ppm; Stk. 109415
- 5/8" Toko #TI-400 Super Long Stroke, Ds OD, 20' Max Bl; Stk. 109195
- National #FX 22M, 2-Die 2-Blow Cold Header, Ppm 400; Stk. 109503
- Waterbury-Farrel #10 Hipro Cold Header; Stk. 109510
- National #34 High Speed, Single Stroke Solid Die Header; Stk. 108695

ENDEREZADORAS DE ALAMBRES / Wire Machinery, Straighteners

- 1/16"-3/16", Shuster #1A, 5 Die, 2 Racks, W/Motor & Controls, 2 H; Stk. 105317
- Lewis, # 4F, Cap 3/32"-1/4", Feed 95-195 Fpm, C.O. 15', Pinch R; Stk. 108178
- .040-.160", Bundgens #UD-3, Max Infd Str 4", Co .20" Long,Fpm 1; Stk. 102534
- 1/16"-1/4", Lewis #2CV,77,1/2"-3" Lg,5-Die Rot Str,(2) Sets Pinch; Stk. 103757
- 5/32"-3/8", Lewis, #8F, Feed Range 95 - 195 Fpm,Hg. To Center 43-; Stk. 58174
- Lewis #8F Wire Straightener & Cutoff, Wire Cap. 5/32" To 3/8"Dia.; Stk. 108821
- 3/8" Shuster #2ab,1 Set Ea Entry/Exit Pinch Rolls,5die 3roll Rot; Stk. 100871
- 6000 #, Miyazaki W/ Draw Bench, Double End Turret Payoff; Stk. 108752
- Lewis #2C3 Wire Straightening & Cutoff, Cap. 1/16"-3/16", 100 Fp; Stk. 108795
- 6' Lewis #2C3 Wire Straightener, .062"-.187" Wire Dia., 100 Fpm; Stk. 108832
- 1/4" Lewis #2CV-4 Wire Straightener & Cutoff Machine, 65-200Fpm; Stk. 108981
- Lewis #7D Wire Straightener & Cut-Off Machine, Wire Cap. 1/16"; Stk. 109053
- Lewis #2CV5 Wire Straightener, Max Dia. .062"-.312"; Stk. 108843

ENDEREZADORAS DE LAMINAS / Straighteners, Sheet & Strip

- .025" X 12", Littell #312/7PDS, 3.5" Dia X 12" Wide Entry Rolls; Stk. 66421
- .078" X 24", Littell, #424-HVS-7PD, 3/4 Rolls, (2) Pinch Rolls; Stk. 105866
- .125" X 10", Rowe, #R10-TC, 7 Roll, 35 - 100 Fpm; Stk. 64849
- 4.25" X 52" Torrington #1010, 4/5 (Spec:Top 4 W/ 5/8" Grooves); Stk. 105160
- 36", Littell, #438-7PDL, Max. Cap. .050 Thickness; Dia Rolls 3; Stk. 103091
- Littell, #212-17PD, 2"Dia Rolls, .090 Thkx12"W,8over9,Loop Con; Stk. 105970
- 36", Pas #OS-7436, 7 Rolls (3/4),12 Ga Stl,W/Entry&Exit Pch Rolls; Stk. 70087
- Littell, #212-17pd, 2"Dia Rolls, .090 Thkx12"W,8over9,Loop Con; Stk. 105970

ENDEREZADORAS PARA BARRAS REDONDAS Y TUBOS / Straighteners, Tube & Bar

- 2", Bigwood, # 1b, 1954, Dia: 3/4" Min. Bar, 3" Max. Tube, 3/4"; Stk. 65294
- 4", Sutton, # 618, 1981, R-L, 80-250 Fpm; Stk. 108560
- 4 1/2", Macintosh Tube and Bar Straightener; Stk. 109512
- 6" Medart #5, 1956, 1.5"-6" Ms Bar, 2-Speed #5 Gear Box, 200 Hp; Stk. 102626
- 18", Wyko #WS12PS, '83, Dia Range: 450mm-160mm, Wall 25mm; Stk. 103745
- Egan, # S30-615 Tube and Bar Straightener Stk. 106228
- Medart # 1 Bar & Tube Straightener, Bar Cap 1/2"-2-1/2", Passli; Stk. 108590
- Medart, # 4, 2-Roll W/Pinoin & Gear Reduction Unit, 5" Dia Cap.; Stk. 106256
- Sutton #B-601-S-2m,'86,Dia .187"-.500",Roll Dia 2.250",Shaft .875; Stk. 101653
- Wyko Series Ws104, 10-Roll Rotary, Cap. 1/2"-2-1/2", Roll Size 5"; Stk. 108163



108752



108960

- Blaw Knox Medart, # 1, Two Roll Straightener; Stk. 108633
- Ruesch #207M,Fly Co Saw,Fd Section,Downcoiler,20' Runout Tble; Stk. 106575
- Mackintosh-Hemphill #AXY 6-Roll Rotary Tube Straightener; Stk. 108960
- Mackintosh Hemp # 920 Tube And Bar Straightener, 6 Roll, Cap; Stk. 109227

ENROLLADORAS DE TUBOS / Tube Coilers

- 1/4"-3-1/2", Torr-Vaill #7s,Hyd Act Stp,Str 15"/6" W/Spacer,Spd 5.; Stk. 105645
- 3" Fenn, Hydr, # 30-3, 1981,30,000 # Ram Pressure, Clamp; Stk. 62562
- 60", Fenn # VNC-60-12 Vertical Spinner Block; Stk. 109293
- 60" Vaughn, # 22-60 Vertical Spinner Bullblock; Stk. 109294
- Marshall-Richards,60" Lr X 84" FB X 96" H, Inverted Vrt 24"; Stk. 101625
- Conran Pancake Type Coiler; Stk. 109311
- Custom Design Level Wind Coiler Line, VerticalID Block, Cap. 1/8; Stk. 109214
- Demag Sms Vertical Spinner Bullblock, 60" Block Dia.; Stk. 109122
- Fenn #VNCB-84" Drawing Machine, 84" Spinner / Rotobloc; Stk. 109123
- Vaughn #84-24-26 Bullblock Drawing Machine, Rotobloc Type; Stk. 109121

Para una lista completa de nuestro inventario
Visite WWW.NATIONALMACHY.COM



NATIONAL MACHINERY EXCHANGE, INC.



108355



108000

- Automated Solution Bundling Machine, New 2000; Stk. 109217

FORMADORAS DE ALAMBRES / Wire Machinery, Forming

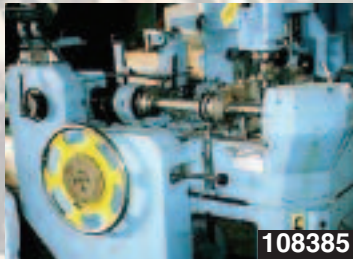
- 1/8" Nilson #S2 4-Slide Wire Form, Max Ribbon W 1-3/8", Max Feed; Stk. 108287
- 3/16" Nilson #S3F, Multi Slide Wire Former, Lg. Og Feed 12"; Stk. 109491
- Baird #00, 1/2 Hp With Varidrive, Controls (On/Off); Stk. 101439
- Baird #1, 4-Slide; Stk. 108145
- Sleeper & Hartley #2 T4; Stk. 103399
- Baird #33, 2.5" Max Stk W, Sym, 1 Ph. Split Hd Cams, Flat St Str; Stk. 106181
- Baird #35 Multislide Max. Fd Lg. 13", Max W Of Stock 3" Wire Form; Stk. 109109
- Baird #4-30, Multi Slide Wire Former, Wire Dia .250", Ribbon Wd.; Stk. 109483
- Baird/Nilson, #752, 1/8" Cap, 1996; Stk. 107836
- Baird #820, Max. Lg Of Feed 25", Max W 8", Multislide Wire Former; Stk. 109196
- **Itaya Wire Former M #Mcs-8d, Max Wire Dia 0.8mm, Coil Outer; Stk. 108355**
- Nilson #S-00, 3/32" Motor W/Control; Stk. 106933
- Nilson, # S-1, Wire Dia 3/32", Max W Strip Metal 1", Feed Lg 8"; Stk. 108371
- Nilson #S-2-F, 4-Slide Wire Forming, Dia. Wire 1/8", Max. W 1-1/2"; Stk. 108264
- Nilson, #S-3, Wire Dia 3/16", Fd 15" Lg, Solid Cams, Remov Heart; Stk. 104506
- Nilson # S-4, Wire Dia. 1/4", Strip W 1-7/8", Feed Lg. 17", Bed; Stk. 108191
- Nilson # S-432; Stk. 108190
- **Nilson # S-5, Wire Dia. 3/8", Wd Strip 2-3/8"; Stk. 108000**
- Torin #T-3-S, Wire Dia .187", Max. Strip W 2", 30-160 Ppm 4-Slide; Stk. 109088

FORMADORAS DE ANILLOS / Wire Machinery, Ring Coilers

- Lubow #Arr375 Wire Ring Roller, Cap 3/8" Dia Wire, Spd Up To 75; Stk. 108822
- Atlas Wire Ring Coiler, 1/2 Hp, 220/240/380/420v; Stk. 104141



109479



108385

FORMADORAS DE RESORTES / Wire Machinery, Spring Coilers

- #W-12, Torrington, Wire To .148", Coil OD 1/4" - 2-3/4", 5 Hp Ac*; Stk. 58524
- # 1, Sleeper & Hartley, Series #731, Wire .010"-.072", 4" Max S; Stk. 103824
- # 1-614, Sleeper&Hartley, Torsion; Stk. 102943
- #10A Torin Spring Maker, Wire Dia .008"-.028", Coil OD .062"-.875; Stk. 109349
- # 14ct, National, 30-100 Ppm (4 Steps), Wire Dia. .008"-.055"; Stk. 65136
- # 2, Sleeper & Hartley, Series #732, Wire .035"-.148", 8" Max; Stk. 103829
- .207" Wire Dia. S&H 2-1/2 Series #669, Segment, Feed - 72", Coil Dia; Stk. 100885
- **# 3015, Torrington Wire Spring Maker, Wire Dia Min-Max .072"; Stk. 108385**
- **Sleeper & Hartley #00-Series 7900, Wire Spring Coiler, Wire .005"-.021", Stk. 109479**
- Wafios Spring Coiler Line, Dia 1.0-3.6mm, Spd 90 & 75mm; Stk. 108096
- Mec # SC-8 Wire Spring Maker; Stk. 108357
- Sleeper & Hartley, Series 666; Stk. 103388
- # W225, Torrington, '48, Dia .080"-.207", Lgth Spr 2.9"-770", 5&7-Ro; Stk. 63712
- # W100a, Torin, Wire Dia .003" To .015", Coil Range 1/32"-9/32"; Stk. 108363
- Torin #W115a Spring Maker, Wire Dia .032"-.112", Coil OD .156"-.1; Stk. 109347
- # W11a, Torin Spring Coiler, Wire Dia .015" To .072", Coil Range; Stk. 108359
- Torin #W11a Spring Maker, Wire Dia. .015"-.072", Coil OD .093"-1; Stk. 109348

FORMADORAS DE TUERCAS / Nut Formers

- 3/16", Waterbury-Farrel #256 5-Die Hipro, 1971, .437" Max Die Ko. .3; Stk. 105999
- 1/4" National, Max. Kick 3/4", Max. Blank Lg. 9/16". Nut Ht. 3/8"; Stk. 107992
- 5/16", National #S2 High Speed Nut Former, Ppm 200, Max. Dia Co; Stk. 109436
- Nutap #Sp-1, Chamfering, 3/8", '54, 125 Ppm, 2 Hp Motor; Stk. 53786
- National #124 4-Die, Ppm 250, Min-Max Lg. Blank 7mm-17; Stk. 107640
- National #164 4-Die Nut Former, Ppm 200, Kick 25mm; Stk. 107643
- National #84 Hs Nut Former, Blank Lg. Max-Min 14mm-6mm; Stk. 107639

FRESADORAS VERTICALES / Millers, Vertical

- Bridgeport #12br Milling Machine, Bed 42" L-R X 9" F-B With T-Slo; Stk. 108952
- Bridgeport #12br Milling Machine, Bed 42" L-R X 9" F-B, Spd 80-27; Stk. 108953
- 9" X 36" Bridgeport #12br Milling Machine, Spindle Speed 60 To 42; Stk. 108971
- Tree #2vgc Milling Machine, 12" Vise, Table 10-1/2" X 42" W/T-Slo; Stk. 109369

HORNOS DE RECOCIDO / Furnaces, Annealing

- 55"Dia X 70"H Ebner, 2 Bases, 1 Furnace, 1 Cooling; Stk. 109193
- Electric Furnace Coil Annealing Furnace; Stk. 109100
- Rockwell Roller Hearth Annealing Furnace; Stk. 109318
- Drever Bright Annealing Line, Ss, Alloys, Coil Wt 10Tons, Coil ID; Stk. 108249

LAMINADORAS DE RODILLOS / Ring Rollers

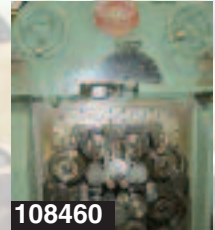
- Ring Roller, Burr Oak #Rm-M2-25lh, '73, 3/8" Dia X .016" Wall X .88"; Stk. 104110
- Burr Oak #Rm-M2-26, 3/8" Dia X .016" Wall X .88" Radius Tube; Stk. 104105
- 1/2" Lubow Cnc Ring Roller And Welder; Stk. 109374

LAMINADORAS 2-HI, 4HI SENDZIMIR / Rolling Mills

- 8-1/2" Waterbury-Farrel (Sendzimir) #PI-16 Planetary Hot Mill, Hea; Stk. 102058
- Fenn, 18 Inch Sendzimir Reversing Cold Strip Rolling Mill; Stk. 108831
- Sendzimir, # Zr 34-10 Mill, 300 Fpm, 14" Dia Min; Stk. 108824
- **Waterbury Farrel, Zr33-13 Max Strip W 14.250", Roll Spd 350/500; Stk. 108460**
- Sundwig, # Wv 20 R-100, 1957, 20-Roll, Work Rolls Dia. 10mm To; Stk. 64480
- 14" Sendzimir # Zr33-14 Reversing Cluster Mill; Stk. 109086
- 19" Sendzimir # Zr 23-19 Rolling Mill; Stk. 109179



107076



108460

- Dms # Zr 22bbs52 Sendzimir Rolling Mill; Stk. 109384
- Waterbury Farrel Zr 22bbs52 Sendzimir Rolling Mill; Stk. 109383
- 3" X 5", Noble & Hunt, For Ribbon Stock, Chain M.D. W/3 Hp Motor; Stk. 69536
- 4 1/2" X 4 3/4", Stanat, 3" Dia. X 4" Face Oscillating Rewind Ree; Stk. 55400
- 6" X 6", Fenn #61, 1967, W/Roller Bearings, 50 Hp, 3/60/440 (1755); Stk. 58297
- 6-1/4"Dia.X8"Face, Buhler #Ew200x150, Rolls:150mm X 200mm; Stk. 105046
- 6.5" X 1, 5" Schmitz 2 Hi Top6. 5" X 3.25" Face, Manual Roll Ad; Stk. 105155
- 8-1/4"X8", Broden-Wean, Water Cooled Rolls, Entry Edge Guide; Stk. 50658
- 8-1/2" X 5" Broden, 2-Hi, Thick Frame 5", Dual Handwheel Manual; Stk. 107383
- 10" X 16" Schmitz Type #Ea-250/400, 2-Hi, W/Control Panel, 37/50; Stk. 103393
- 20" X 60" Rolling Mill; Stk. 107912
- Yoshida Kinen #101-Fm, Press 15-20%, Roll: 1.9685"Dia X 1.578"W Stk. 103935
- 18" X 28" 2-Hi Bliss Temper Mill; Stk. 109493
- 1 1/2" X 8" X 6", Waterbury-Farrel, Work Rolls Dia 1-1/2", Face W; Stk. 108150
- 4" X 14" X 10", Morgan 4-Hi Rolling Mill, Mill Stand 16-1/8", Fac; Stk. 108148
- 1-Set 21" X 56" X 66" Mesta Mill Stand Housing; Stk. 109019
- 1-Set 21" X 56" X 66" Mesta Mill Stand Housing; Stk. 109020
- 1-Set 21" X 56" X 66" Mesta Mill Stand Housing; Stk. 109021
- 10 1/2" X 33" X 24" United 4-High Reversing Mill; Stk. 109168
- Davy (Loewy Robertson) 4 High Reversing Cold Rolling Mill; Stk. 109239
- Loewy Robertson Skin Pass Rolling Mill; Stk. 109243
- **6"x5" Fenn 2HI, 10 HPDC, Input 220Vac, w/Controls, Footpedal Jog, Stk. 107076**

LINEAS DE CORTE LONGITUDINAL / Slitting Lines

- 36" X 3" X 4000 #, Stanat Slitting Line; Stk. 64624

Comuníquese con nosotros para actualizar su maquinaria o equipo metalúrgico



- 14" X 2-5/8" X 3000 # Seco Ruesch Slitting Line; Stk. 107123
- 24" X 1/4" Cams Slitting Line; Stk. 108550
- 30" X 4" Broden Slitter Head, Air Operated *****; Stk. 101365
- 30" Seco, 16"Id, Cap. 12"Id X 36" Od X 17"Face, Hyd.; Stk. 106379
- 36" X 5" X 6,000 # Stanat Slitting Line; Stk. 106053
- 36" X 6" X 13,700 # Yoder Slitting Line; Stk. 106892
- 36" X 4.5" X 12,000 #/15,000 # Yoder Slitting Line; Stk. 68987
- 42" X 6.5" X 40,000 # Stamco Slitting Line; Stk. 104574
- 48" X 6" X 25,000 #, Paxson Loop Slitting Line, 650 Fpm; Stk. 109406
- 60" X .115" X 40,000 #, Stamco Loop Slitting Line; Stk. 109405
- 60" x .135" x 50,000# Braner Turret Head Slitting Line; Stk. 109379
- 72" X .375" Paxson Dual Head Loop Slitting Line; Stk. 109259
- 31" X .0079" X 10,000 # Redex Slitting Line; Stk. 107972
- 36" X 6" X 21,000 # Yoder Slitting Line, 37-1/2" Wide Cap.; Stk. 108749
- Ruesch 24" Driven Arbor-Loop Ring Slitter, Wd Strip 23", Max. Lin; Stk. 109525
- 48" X .250" X 50,000 # Terminal Slitting Line; Stk. 109391
- 59" X .120 X 30,000 # Mariani Slitting Line; Stk. 109282
- 59" X .120" X 30,000 # Nordmeccanica Slitting Line; Stk. 109284
- 60" X 55,000 # X .135" Braner Turret Head Slitting Line; Stk. 109379
- 72" X 9.00" X 60,000 # Pro Eco Slitting Line; Stk. 108897
- 72" X .250" X 60,000 # Stamco Slitting Line (1999); Stk. 109252
- 60" X 9.00" X 40,000 # Paxson Slitting Line, Coilid Entry 20"/24"; Stk. 108905
- 59" X .24mm X 48000 # Proin Slitting Line; Stk. 109274
- 18" X 3" (457mm X 76mm) Ruesch Slitting Line; Stk. 109404
- 60" X .430", 1999 Slitting Line; Stk. 106103
- 60" X .125" X 60,000 # Stamco Slitting Line W/Stamco Packaging; Stk. 109235

LINEAS DE CORTE TRANSVERSAL / Cut-To-Length Lines

- 20.5" X .065 X 4000 #, Cc, Str, Feeder, 24" Max Length Feed, Rbi; Stk. 107028
- 32" X .125", Hallden #541, Steel .090" Thk, 350 Fpm, 10 Lev Roll; Stk. 107982
- 42" X .075" X 7,000 #, Dallas, Cap Payoff Reel, 7-Roll Flattener; Stk. 66228
- 48" X 12ga X 20,000 #S Dahlstrom Cut To Length Line; Stk. 108722
- 48" X .120" X 20,000 # B & K Cut To Length Line; Stk. 108640
- 60" X .135" X 50,000 # Herr Voss Stamco Cut-To-Length Line; Stk. 109401
- 72" X .134" X 60,000 #S Delta Trapezoid Cut-To-Length Line; Stk. 109018
- 72" X .250" X 40,000 # Cincinnati Cut-To-Length Line; Stk. 108311
- 72" X .250" X 50,000 # Paxson Cut To Length Line; Stk. 109481
- 72" X .375" X 40,000 # Cauffiel Cut To Length Line; Stk. 108797
- 2000mm X 5mm (78" X .2") Sacma/Salico Cut To Length Line; Stk. 109482
- 96" X .500" X 60000 #, Delta Brands Cut To Length Line; Stk. 109438
- 2000mm X 12mm X 25Ton Atecnin Cut To Length Line; Stk. 108736
- Wean Scen Fimi Cut To Length Line With 6 Hi Levelers; Stk. 109119

MAQUINAS DE ALIMENTACION Y ENDEREZADO / Feeding & Straightening Machines

- 24" X 10000 # X .078" Auto Fd/Littell Servo Line, Str: 2/3, Spd; Stk. 106919
- 38" W. X Littell, # 438-16, 1 Set Driven Pinch Rolls, Standard; Stk. 65319
- 1/2"Str, Dallas, # Dwf-500, Entry R-L, 7 Roll 2 Plane Horiz/Vert; Stk. 105862
- Jaybird #J15-2412, Max:Stock W-24", Str.Lg-12", Stroke/Minute-60; Stk. 106092

MAQUINAS PARA ACABADO / Finishing Machines

- Vibraslide #20, Door Ht. 9-1/2" Wd 21-1/2", 6 Hp; Stk. 107491
- Api, 1995, Max-Min Dia. 7.0"-3.0", Speed 7" Ppm, Lg. 45"; Stk. 106436

MAQUINAS PARA EMPAQUETAR / Packaging Machines

- Signode Coil Packaging Line; Stk. 109431

MAQUINAS PARA FABRICAR ALAMBRES / Wire Machinery Miscellaneous

- Spuhl #Dn-80-Sw, For Square Mesh Underbedding; Max 94.49" Lg; Stk. 101898
- Link Fabric, Frank Wells, '65, 4"X2" Link Size, 60 Long Links/Min; Stk. 69007
- Mesh-Sq/Diamond, Wafios #Vef-10-1, .2"- .79"/.295" X 6"-6" X 1.2", Di; Stk. 54393
- Macbee, 16 Ga X 4000 #, '95, Po/Takeoff Splrs, Tank: Acid/Wa; Stk. 104623

- Complete Factory for the Production of Reinforcement Wire Mesh; Stk. 106247

MAQUINAS PARA FABRICAR CLAVOS / Nail Making Machines

- Wafios #B115 High Speed Tack Maker, Max Wire Dia .060" Stk. 109040
- Wafios #B120 High Speed Tack Maker, Max Wire Dia .12"; Stk. 109039
- Wafios #B125 High Speed Tack Machine, Max Wire Dia .12"; Stk. 109038
- Glader #Cr35, 8 Ga, 450 Ppm, Max Lg 88.9mm, Max Dia 4.88mm; Stk. 108176
- Wafios #N100 High Speed Nail Maker, .087" - .149" Wire Dia.; Stk. 109035
- Wafios #N140 High Speed Nail Maker, Wire Dia .122" To .181", 370; Stk. 109037
- Wafios #N4 High Spd Nail Maker, Wire Dia .070" - .122", Npm 550; Stk. 109033
- Wafios #N5, Wire Dia: 2.2 Mm-3.8 Mm, Lg: 13mm-104 Mm, 430 Nai; Stk. 106393
- Wafios #N75 High Spd Nail Maker, Wire Dia 1.8mm-3.1mm, 55ppm; Stk. 109032

MARTILLOS DE CAÍDA LIBRE / Hammers, Drop

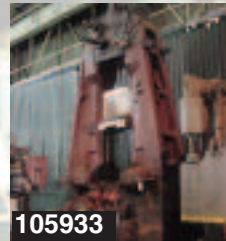
- 3000 #, Chambersburg Ceco-Drop, Ram 25.5"X23", 23.5"Dbg, Block; Stk. 105933
- 2000 #, Chambersburg, Ceco Drop, Inserted Guides, 46" Str, 55"; Stk. 104643

MOLINOS A TAMBOR / Tumbling Barrels

- # 20-2, Elliot, Vibraslide Barrel Tumbler; Stk. 109049
- Henderson Bros. Tumbler; Stk. 103397
- Ransohoff, W/480v Motor And Controls.; Stk. 104701

MOLINOS PARA PRODUCIR TUBOS / Tube Mills

- 1 1/2", Abbey Etna, # 1ku, 1976, Stainless Steel Tube Mill****; Stk. 107796
- 2" X .125 Turek & Heller #Wu-25, Carbon Steel Tube Mill Line; Stk. 108562
- 2" X .095" Yoder W Style Tube Mill Line With Kent Floop; Stk. 108801
- 2-1/2" X 1/2" X .095 Aef # K225 Tube Mill, L-R, Line Spd. 350; Stk. 108799
- 2 1/2" Turek&Heller #Wu-20-10, Od Cap. 625-2.5, Wall .020-.120; Stk. 107795
- 2-1/2 Back Chun Tube Mill Line, Max Thick 4.5mm, Line Spd 6.0; Stk. 108444
- 1", Kbm Stainless Steel Tube Mill; Stk. 108442



- 1 1/4" (32mm X 2mm) Somenor Tube Mill Line; Stk. 109185
- 2 1/2"(65mm X 3mm) Somenor/Oto Rafted , 16mm-65mm; Stk. 109130
- 2 1/2"(65mm X 3mm) Wean Damiron, 16mm-65mm, 8mm-3m; Stk. 109157
- 5" X .225", Mckay Erw Tube Mill; Stk. 109380
- Mori Welded Tube Line, Strip Thickness 0.25-0.7mm, Dia. 7mm; Stk. 108658
- Mannesmann Meer #Srdw 355 A6/300a 24-Std Tension Type; Stk. 108790

MATRIZADORAS / Swagers

- Torrington #312, Max. Cap Tube 7/8", Max. Cap Solid Work 3/8", Bp; Stk. 108170
- 1 1/2", Abbey Etna #156-Ra, Die Length Std 6", Min 4", Max 12". 2; Stk. 53490
- 2", Torrington, # 4, 2" Diameter Hole, 5 Hp 1750 Rpm Motor ****; Stk. 100801
- 2 1/4", Torrington, #433, Solid Work 60000 Psi, Material 5/8" ***; Stk. 64669
- Abbey Etna, # 1515, W/Hyd Feed, Main Mtr 7-1/2 Hp; Stk. 104998
- Fenn, #2f, Dw 1-5/8", Dh 1-1/8", DI 1-7/8", LD 6-3/4", OD 8-1/4", Sp; Stk. 106085
- Abbey Etna, # 1515, W/Hyd Feed, Main Mtr 7-1/2 Hp; Stk. 104998
- Torrington #1033, 2-Die Type, Solid 60000 Psi Mat Cap 1", Cap.Tub; Stk. 102205

NIVELADORAS / Levelers

- 65", MCKAY, Roll Dia. 2.5", Dble Back-Up 9/8 Rolls, 30 HP AC Varidr; Stk. 101977
- Hilles & Jones #000, 8 Rolls 4-1/4" Dia, 48" Bet Hsgs W/Vari-Driv; Stk. 54216
- Schubert #Wm1/220 Roll Leveler, Working W 8", # Rolls 19; Stk. 108925
- 40"X .024" Mckay, 9 Over 8, 40"W X 2-7/16"Dia, 1000 Ft/Min, 40 Hp D; Stk. 51721
- 120"X.125", Mckay, 9 Rolls, 2.5" X 126, 2 Pinch 12" X 126", Md Roll; Stk. 56771
- 16" X .090" United Roll Leveler, 13 Roll, Roll Size 1-5/8"Dia. X; Stk. 108612
- Hilles & Jones, 4 Over 4, 40"X4" Roll Dia, Handwheel Type, Motor; Stk. 59133
- Tishken #FIs-28mw2-1/2, 3-1/2" Dia X 30" Width, Scrap Chopper, 3; Stk. 62384
- Schubert #Wm1/220 Roll Leveler, Roll Dia .709", Working W 8"; Stk. 108926
- Yoder, Rolls: 1.5" Dia, 8.25" Face, 6 Rolls (3over3), Entry/Exit G; Stk. 103620

Nuestro inventario cambia diariamente

Visite nuestro website: WWW.NATIONALMACHY.COM



NATIONAL MACHINERY EXCHANGE, INC.



107791



109210

PORTA ROLLOS DESEENROLLADORES DE LAMINA / Recoilers

- 10000 # X 36" B & K #10b Traversing Base Recoiler, Coil Cap. 60"; Stk. 101792
- 20000 #, Paxson, Hyd Manual Exp., Hold-Down Snubbing Roll; Stk. 105795
- Littell #3g, 10"-20"Id, 46" Max Od, 6-1/2" Max Coil W, 1/4 Hp (1); Stk. 105279
- 2000 #, Littell, # 20-12, 12"Max W,16"-20"Id Range,48" Max O; Stk. 105967
- 4000 #, Littell #40-18, Od 69",Id 15"-20", Coil Width 18", Handcr; Stk. 105300

PERFILADORAS PARA LAMINAS / Roll Formers

- 5 Stnd, Outboard Type, 9"Hc,4.75"-6.5"Vc,Tool Arbor:1-5/8"Diax1-3; Stk. 105287
- 6 Stnd, Artos,Gutter Typr 4k Box,6 Roll Stands, Chain Drive, 10 E; Stk. 101556
- 6 Stand, Maplewo Od Roll Former, Outboard, 1"Arbor, 1-3/4"Rs; Stk. 105283
- 7 Stnd, Yoder M1-1/2, 8" Rs, 11" Horiz. Ctr. Dist., 4-6" Vert. Ct; Stk. 105268
- 8 Stnd, Rafter,1.5" Arbor Dia,14" Horz C-C,4.25"-7.5" Vert C-C,14; Stk. 104857
- 10 Stnd, Dahlstrom #400-10 Rollformer, Max. Cap .060", Arbor Dia.; Stk. 108743
- 12 Stnd, Asc Rafted Roll Former, 2-3/4" Arbor Dia., 23" Rs; Stk. 109389
- Yoder, Roll Former #M2, 36"Roll Space, 18" Hc, 2 1/2 Arbor Shaft; Stk. 108474
- 18 Stnd, Bradbury, Roll Space 23", Arbor Dia. 1-1/2", Horiz. Cent; Stk. 107791
- Mckay # 700 Series, Custom, Carbon Steel Shaping Mill, Squares; Stk. 108554
- 26 Stnd, Yoder # M2-P 300 Rollformer, 3" ShaftsArbor; Stk. 108641

PRENSAS DE ACCION DOBLE CON ARTICULACION DE ROTULA / Presses, Toggle, Double Action

- 50/26 Ton, Bliss #5a,'63, Str PI 5"/BI 1-1/4",Sbg, Da Cam, 15 Hp; Stk. 57182
- 52/35 Ton, Bliss #1-1/2b,Str 8",Bed 20-1/4" X 21-1/4",Ram 15" X 1; Stk. 102098



109249



109247

- 90/60 Ton, Warco #150-D1-28, Str: BI/PI 10/16", Adj 4", Sh: BI/PI; Stk. 101582
- 90/122, Bliss #3-1/2c,Bh/PI:St 11.5"/20";26"6wbu,Bd 25"X28"; Stk. 105310
- 150/110 Ton, Bliss #3-3/4b, 1960, PI/BI: Str 22"/15", Sh 30"/28"; Stk. 66207
- 230/155 Ton, Bliss #5-S, '51, 30"/14" Str, 35" Sh, 8" Adj, Bed 41; Stk. 105127
- 3-1/2b, Bliss, Bed 25"X28", Air Cl, 15hp; Stk. 107026
- Bliss #3-3/4b, St:PI 22",Bh 15",Adj 6",Sh:PI 30",Bh 28",Bd 29"X30; Stk. 105723

PRENSAS DE ACUÑADO / Presses, Coining, Mint Coining

- 120 Ton, Schuler #M120, 125-250ppm, 15,000 P/Per Hr., W/Hopper; Stk. 104666
- 150 Ton, Schuler #M150, 32mm(1.26") Gold, Bronze Copper; Stk. 104668
- 1250 Ton, Sack & Kiese #Ach, 1972,14.2"Str,19.2"Sh,27"Wbu; Stk. 105811



105981



108806

PRENSAS DE ALTA VELOCIDAD / Presses, High Speed Prod.

- 15 Ton, Minster, # B1-15, 3/4" Str, 1-3/4" Adj, 400 Spm, Bed 10; Stk. 62285
- 20 Ton, V & O, Spm 200; Sh 17"; Slide Adjustment 3"; Air Clutch A; Stk. 103186
- 25 Ton, Bruderer High Spd, Bed 530mmx530mm; Ram 360mmx540; Stk. 108486
- 30 Ton, Minster, Piecemaker, M #P2-30-30 W/Wpc Clutch/Brake; Stk. 109247
- 60 Ton, Bliss #660 Ss/Dc,1-1/2"Str,2"Adj,9-1/2"Sfo,Ac,23-1/2"Wbu; Stk. 105049
- 60 Ton,Johnson #S2-60-30-30, 2"Str,18"Sh,135-405spm, 12"W; Stk. 100650
- 60 Ton, Minster P2-60, Piece Maker W/ Power Coil High Speed; Stk. 109249
- 60 Ton Oak #Fp-2-42'67,Rebuilt '80,1.5"St,16"Sh,4"Bol,150-400spm; Stk. 106347
- 100 Ton, Danly, # H2-100-48 X 36, 1952, Str 2", Sh 15", Adj 2"; Stk. 104198
- 100 Ton, Minster #P2-100-54 Piecemaker,2"St,27.5"Sh; Stk. 105711
- Minster, # P2-30, Str1-1/2, Shut 14", Bed 20"X19", 400 S.P.M. H; Stk. 109260
- Minster, #P2-45, Str 2-1/2", Shut 15", Bed 25"X44", Ram 19"X42" H; Stk. 109261

PRENSAS DE ARTICULACION TIPO ROTULA PARA ACUNADO / Presses, Knuckle Joint

- 75 Ton, Bliss #4, 1-1/2" Str, 1/4" Adj, 11" Sh, Bed 16"X16"; Ram; Stk. 63639
- 100 Ton, Minster #90-100,St 3.5",Bd 24"X22",Ram 20"X10",Sh 10"; Stk. 105980
- 200 Ton, Bliss #6-K,1.75"Str,15.25"Sh,.400"Md Adj,18.5"X9.5"Bd; Stk. 105872
- 225 Ton, Bliss #6-K,1.75"St,15.25"Sh,.400"Md Adj,18.5"X9.5"Bd; Stk. 105880
- 250 Ton, Minster #90-250, St 3", BD 19"X30-5/8", Ram 18"X15", Stk. 105981
- 250 Ton Minster #90-250 Knuckle Joint Press, 4" Str., 1/2" Adj, W; Stk. 108803
- 250 Ton, Minster #90-250 Knuckle Joint Press, Wbu 19", Bed 18; Stk. 108807
- 400 Ton, Minster #90-400 Knuckle Joint Press, Str. 4", SH 23", Stk. 108806
- 400 Ton, Bliss #KJ-400-20-20 Knuckle Joint Press, Str. 4", Sh 15"; Stk. 108804
- 600 Ton, Bliss #25-A Knuckle Joint Press, 35 Spm, 3.5" Str., 21"; Stk. 108836
- 600 Ton Bliss # #25-S Knuckle Joint Press, 22 Spm, 10" Str.; Stk. 108839
- 600 Ton Minster #90-600 Knuckle Joint Press, 6" Str., Adj 1/2", 1; Stk. 108838
- 800 Ton Bliss/Toledo #665 Knuckle Joint Press, 35 Spm, 5" Str., 1; Stk. 108842
- 1000 Ton Bliss-Toledo #666 Press, 37" X 31" Bed, Str. 5", Sh 18"; Stk. 108515
- 1000 Ton Minster #90-1000 Knuckle Joint Press, 30 Spm, 5" Str. 3; Stk. 108840
- 1200 Ton Bliss #28 Press, 47" X 37" Bed, Str. 6", Sh 32-1/4", Spm; Stk. 108513

PRENSAS DE BASTIDOR EN "C" / Presses, Gap Frame, Single Crank

- 25 Ton, Niagara #M22-S, Str. 2-1/2", Slide Adj. 2", Sh 13-1/4", A; Stk. 109069
- 32 Ton, Perkins, # 32s, Hi Spd Gap Frame Press 2 1/2"Str, 1980; Stk. 108489
- 45 Ton, Perkins, # 45s Hi Spd Gap Frame Press, Bed 30"Lrx18"Fb; Stk. 108487
- 60 Ton, Minster #70-4 Gap Frame Single Crank Press, Str. 7", Adj; Stk. 108937
- 100 Ton, Rockford #G-110-1,'80,10" St,45" Bd-Lide, 25/50; Stk. 101031
- 150 Ton, Danly,'74,St 12",Sh 19.5",Adj 4",Bd 50"X30",Air Cl,35 Sp; Stk. 105124

PRENSAS DE EXTRUSION / Presses, Extrusion

- 300 Ton, Lombard #E11055 Extrusion Press, 50 Hp, Billet Size 3" D; Stk. 108415
- 1250 Ton, Sutton, 6" Billet, 26" Billet Length Aluminium; Stk. 109399
- 1500 Ton, Loewy, 6" X 28" Billet Size Extrusion Press; Stk. 109396
- 1600 Ton, Sutton, 1971, Direct Aluminium Press W/ Ancillary Equip; Stk. 109241
- 1650 Farrel Aluminium Extrusion Press, 7" Dia X 33" Length Billet; Stk. 109476
- 1750 Ton, BLH, 7" X 28" Billet Size Extrusion Press; Stk. 109395
- 1800 Ton BLH, 7" Billet, 30" Max Billet Length Extrusion Press; Stk. 109408
- 2200 Ton, Youngstown 8" X 32" Billet Extrusion Press; Stk. 109394
- 2250 Ton Lake Erie Eng Extrusion Press; Stk. 109078
- 2350/2500 Ton Sutton Aluminum Extrusion, 9" Dia X 33" Max; Stk. 109477
- 2,500 Ton Demag Wean Copper Tube Extrusion Press; Stk. 109267
- 2500 Ton Sutton 8" Aluminum Extrusion Press, 8" Billet, 36" Bille; Stk. 109381
- 2350/2500 Ton Sutton Aluminum Extrusion, 9" Dia X 33" Max; Stk. 109477
- 2,500 Ton Demag Wean Copper Tube Extrusion Press; Stk. 109267
- Herlan #P-12 Impact Extrusion Press, Dia. Aluminium 120mm; Stk. 109174
- Herlan #SP-8 Impact Extrusion Press, Lg. 2900mm, Wd 2250mm I"; Stk. 109190
- Herlan #P6, 215 Nom. Pwr, 270 Overload, 350 Str, 45 Max Dia; Stk. 103960
- Herlan # P6 Impact Extrusion Press; Stk. 109210

PRENSAS DE FORJA / Presses, Forging

- 3000 Ton, National Forging Press, Sh 47-1/2"; Stk. 108933
- Etchells #Mf 20/250, Horizontal Forging Machine, 80 Spm; Stk. 108835
- 250 Ton, Etchells, Multiforge # Mf.20/250, Horizontal Forging; Stk. 108632
- 4000 Ton, National Maxipress, Spm 46, Str. 380mm, Sh 990mm; Stk. 109353

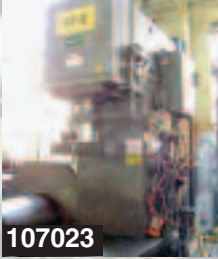
PRENSAS HIDRAULICAS / Presses, Hydraulic

- 500 Ton, Modern #13mi, 4-Post Hobbing, Str. 5", Ram Dia 13"; Stk. 108646
- 750 Ton, Sepore, 3" Str, 29-1/2"X25" Bed, 30 Spm, 180 lpm; Stk. 65752
- 4 Ton, Denison, Str Adj To 6", Bed 16"X10.5"; Stk. 50958
- 6 Ton, Denison, 6"Str, 6-1/4"Thr, 3-1/4" PisTon, 2"; Stk. 104525

Compramos y vendemos
todo tipo de maquinaria metalúrgica



- 8 Ton, Denison, 8"Thr, Bed 22"X14"; Stk. 65207
- Denison #Ac, 25t, 10"Thr,12"Str,Bed 21"X18.5",Ram 8" Dia, 15 Hp; Stk. 105406
- 50 Ton, Denison #Na50 Multipress, '52, Str 15", Bd 31.25"X19.5"; Stk. 102962
- 75 Ton, Greenerd, 24"Str, 1973, Thr 13", Bed 28"Lrx19fb, Ram 19-1; Stk. 107023



107023



107872

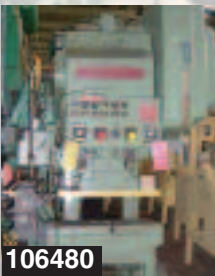
- 100 Ton, M & N, 5" Str, 12" S.H., 5 Hp 220 Volt 3 Ph 60 Cycle 173; Stk. 100959
- 100 Ton Power Team #Spf 100, Dia. Ram 4", 50" Bsf, Bed 17" Front; Stk. 107387
- 150 Ton, Meyer & Schnegg, '67, Ram Dia 6.5", Bet Up 11.5" X 6.5", 9.2; Stk. 104045
- **Cincinnati #175 Obs, 175 Ton, 95" W, 100" D, 153" H; Stk. 107872**
- 200 Ton, Clearing, Str 18", DI 23", Bed&Ram 42"X30", 30"X18" Btw; Stk. 103307
- 200 Ton, Pmf, Bd 55" Lr X 28.5" Fb, Ram 51.5" X 37", Bol 7", 20 Hp/1; Stk. 100848
- 200 Ton, Vernon #200-Hd1-60t, 24"St, 41"DI, 24"Sh, Bed 62"X36"; Stk. 105678
- 400 Ton, Williams & White, Down Acting, Heated Platens, Str 36", 75; Stk. 105194
- 60000 Ton, Vernon Wheelon 60000r-50-240, Tray 50"X240"; Stk. 105720
- 125 Ton, 4-Pt #46-47, (Downact Ram), 60 Ton Side Ram, (4) 3" Dia; Stk. 66708
- 250 Ton, Bliss #Hd-250-150-H-48-42, 24"Str, Ram 48" X 42", Pl 30"; Stk. 101681
- 1000 Ton, M & N #21-1m, Max Str. 4-1/2", Daylight 21", Ram 23" X; Stk. 107634
- 400 Tons, Lake Erie, '52, Triple Act, 56"Str, 56" Day, Bed 48"X60", Be; Stk. 101390

PRENSAS DE LADOS RECTOS, ACCION SIMPLE / Presses, Straight Side, Single Action

- 60 Ton, Havir, Bed 28.5"X22.5"; Ram 16"X11", 10.75"Sfo, 28.5"Wbu; Stk. 105048
- 100 Ton, Arisa, 10.82"Sh, Ram 14.76"X14.76", Bd 19.68"X27.55"; Stk. 104454

PRENSAS DE LADOS RECTOS, ACCION DOBLE / Presses, Straight Side, Double Action

- 150 Ton, Bliss #7, SS, Triple Crank Double Action Press, Str. Pl; Stk. 109281
- 150 Ton, Bliss #7 SS, Triple Crank Double Action Press; Stk. 109309
- 600 Ton Minster Hevi-Stamper Straight Side Press & Feed Line; Stk. 108619
- 60 Ton, Waterbury-Farrel, Bed 30"X29", Ram 27"X21", Ac, Fly, 1; Stk. 105824
- 65 Ton, Warco 65-2-48C, Str. 8", S.H. 29", Adj. 4", Bed 48"X30", S; Stk. 102066
- 75 Ton, Warco #S2-75-9626, Str. 8", Sh 22", Bed 96"X26"; Stk. 102037
- 80 Ton, Rousselle #8SS-30-80, Bed 30"X80", 2-3/4" Bolster, Air; Stk. 102978
- 125 Ton, Johnson #S2-125-48, Str. 6", Sh 23", Adj. 4" Bed 48" X 36; Stk. 102194
- 200 Ton, Niagara #SC2-200-72-36, 1968, 8"Str, 32"Sh, 30-60; Stk. 103432
- 250 Ton, Niagara #BP2-250-60-42, 12"Str, Bed 60"X42", 30"Sh, 11"Adj; Stk. 105674
- 300 Ton Minster Hevi-Stamper # E2-300-84-48 2-Point Ss Eccentri; Stk. 108535
- 100 Ton Niagara #SA2-100-36-30 Ss/Dc Press Line, Str. 4", Sh 16"; Stk. 109074



106480



107919

PRENSAS DE RESPALDO ABIERTO INCLINABLE / Presses, O.B.I.

- 32 Ton, Bliss #20-B '55, 3" St, 6.5" Thr, Bd 25-1/2"X13-3/4", Ram 10; Stk. 61532
- **35 Ton, Bliss, St 4", Adj 2.5", Thr 9", Sh. 10.5", Bd 26.5" X 17", V; Stk. 106480**
- 40 Ton, Rockford #40W, 3"Str, 10-3/4"Sh, 7-1/8"Thr, Bed 26"X14"; Stk. 105252
- 50 Ton, V & O #50S, 5" Str, 3" Adj, Bed 32"X22-1/2", Crank Dia. 3; Stk. 59837
- 60 Ton, Bliss #C60-B, '65, 6"Str, 35"X33.5"Bed, 16"Sh, 40-80 Spm; Stk. 103125
- 60 Ton, Niagara #Es60, 6"Str, 18"Sh, 90spm, Bed 32"X21"; Stk. 103243
- 71 Ton, Minster #7, Obi/Sc Press, Str. 8", Slide Adj. 3-1/4", Thr; Stk. 108936
- 75 Ton, Clearing, 5" Str, 18-1/4"Sh, 40 Spm, Bed 36"X25"; Stk. 102014
- 75 Ton, Niagara M-75, Str. 4", Sh 15.75", 3-3/8" Adj, Bed 36"X24"; Stk. 101957

- **110 Ton, Bliss #C-110, '68, ST 6", SH 21", Adj 4", 40 SPM, Stk. 107919**
- 110 Ton, Bliss #C-110, '84, 8" St, 17" Sh, 4" Adj, 40 Spm, Thr.; Stk. 107918
- 200 Ton, Clearing, 10"Str, 24"Sh, 5"Adj, 35spm; Stk. 105565
- 150 Ton, Niagara #AF6-1/2, St 8", Sh 20.5", Bd 50" X 30", Air Cl, Bols; Stk. 101883
- 200 Ton, Clearing, 10"Str, 24"Sh, 5"Adj, 35spm; Stk. 105565

PRENSAS DE RESPALDO ABIERTO INCLINABLE, VOLANTE DE UNA BIELA / Presses, O.B.I., Flywheel, Single Crank

- 15 Ton, V & O #15, 3"Str, 2" Adj, 8-1/4"Sh, 4" Thr, 9-1/2" Wbu, 12; Stk. 106253
- 32 Ton, Niagara #A3-1/2, Ram 3-3/4", Bed 27"X17-3/4"; Stk. 105684
- 35 Ton, Bliss #C-35, '62, St 3", Sh 10.75", Adj 2.5", Bd 26.5x17.5; Stk. 104860
- 35 Ton, V & O #35st, Obi/Sc, 2"Str, Bed 16"X29", Thr. 8-1/2"; Stk. 104348
- 60 Ton, Bliss C-60, Str. 2", Adj. 3", S.H. 16-1/4", Throat 10-5/8"; Stk. 101887
- 75 Ton, Minster #7f, 3-1/2" Blstr, 4"Str, 15"Sh, 36"X24bed, 90spm; Stk. 105809
- 75 Ton, Niagara #Es75, 8"Str, 21"Sh, 90 Spm, 3"Adj, Bed 36"X24"; Stk. 103447
- 60 Ton, Rousselle #6a Obi/Sc Press, Str. 5", Sh 16-1/2", Adj. 3-1 K; Stk. 109075

PRENSAS DE TORNILLOS / Presses, Screw

- 150 Ton, Z & H #12, 12"St, 9"Sh, 18"Wbu, Bd 17"X 17", 245 Spm; Stk. 106382
- 160 Tons Weingarten Ps-125, 1980, Dia 125mm, Str 100-300mm; Stk. 101015
- 270 Ton, Zarz #Ln6, 1978, Screw Dia. 220mm Or 8.66", Bed 19-1/2"; Stk. 70029
- 550/1000 Ton, Zarz #Ln 9/M, 300mm Dia, 34" Dbu, Bed 32"X32"; Stk. 102997

PRENSAS DE TRANSFERENCIA PARA ESTAMPADO / Presses, Eyelet & Transfer

- IWK Type Pst 100/8 Transfer Press, Drawing Depth 3-15/16"; Stk. 108497
- Waterbury-Farrel #108 Transfer Press, Plungers 8, Dia Feed Roll; Stk. 108494
- Waterbury-Farrel #128 (#15) I.C.O.P. Auto. Transfer Plunger Press; Stk. 108495
- Waterbury-Farrel #1510 Eyelet Press, Cam Roller Type, Sta. 10, B; Stk. 108496
- Waterbury-Farrel # 58 Cam Eyelet Press, Plunger 8, Die Holder 1; Stk. 108492
- Waterbury-Farrel # 121212 Sta., Icop, W/Oil Recirculation Pump, P; Stk. 105548
- Waterbury-Farrel #2010 Icop Auto, Plunger, 6" Coil Fd, Max Draw D; Stk. 104009
- Waterbury-Farrel #150-11 Transfer Press, Blnk Dia. 3-3/4", Str. 6; Stk. 109073
- Waterbury-Farrel #200-11 Transfer Press, 11 Stations, Str. 8", Dr; Stk. 109071

PUNENTES GRUAS / Cranes, Bridge & Overhead

- 1 Ton, Custom Built 13'9" Span, 17' Lift, 17 Fpm, 220 Volt A/C; Stk. 101854
- 10 Ton, Checo, Span 27', Lift 44'. Top Rail To Top Trolley 48", Pend; Stk. 100747
- 5 Ton, Demag Bridge Crane; Stk. 109327
- 10 Ton, Birmingham Crane And Hoist Bridge Crane; Stk. 109325
- 20 Ton P & H, Span 105' 1975, 105'span, 35' Lift Running Double G; Stk. 109170

REBORDEADORAS / Flangers

- 5/8", Blue Valley, #6, 1950, Stainless Steel 7/16", Diameter 2; Stk. 105716
- 6" Blue Valley, Mild Steel 5/8" Thick, Stainless Steel 7/16"; Stk. 105705
- 3/8", Blue Valley #4, 5 Hp Main Motor/Controls, 1 Hp Hyd Pump Mot; Stk. 108070

ROLADORAS DE ANGULOS Y PLACAS / Bending Rolls

- Buffalo #1VBR, 30 Adj Roll Tonnage, 3.5" Adj Roll Trvl, 11.2 Rpm; Stk. 105760
- Promecut Angle Bending Roll, Rolls 5" Dia./1-1/8" Shaft Diameter; Stk. 108965
- 4'x 3" Lown, #B-300, Gauge 16-18, Rolls 4' X 3" Dia., Foot Ped; Stk. 108243
- 6' X 1-3/8", Bertsch #18, 15"Roll Dia, Pneu Drop End, Md Adj., Front 2; Stk. 105944
- 10' X 1/2" Bertsch, Roll Size: 10" Dia. X 10'6" Wide Face, Max. C; Stk. 108079
- 20' X 1", Bertsch #20, Dia. Rolls 23", 20'-2" Overall Lg. Of Ro; Stk. 107755
- 6' X 1/2", Bertsch, #9, 1967, Plate Bending Rolls; Stk. 109407
- 1/2" X 6", Webb #61, Roll Dia. 10", Motor 10 Hp; Stk. 106285
- 8' X 3/8" Webb #71 Plate Bending Roll, Roll Size 8" Dia X 8' Face; Stk. 108068
- 10' X 3/4", Bertsch, #14, 1973 Initial Pinch Plate Bending Rol; Stk. 108930
- 10' X 13/16", Bertsch, Mechanical Plate Rolls; Stk. 109050
- 10' X 2 1/4", Bertsch, #30, 1951, Initial Pinch Plate Bending; Stk. 109139



107150



109220

No encuentra lo que busca, contáctenos a
SALES@NATIONALMACHY.COM



NATIONAL MACHINERY EXCHANGE, INC.

- 10' X 12 Ga, 60 Ton Capacity, Chicago #810L Press; Stk #107150
- 3000mm 4" Davi, # MCO T3080, 2005, Bending Roll; Stk. 108811
- 12' X 1 1/2", Webb, #241, Initial Type Bending Roll; Stk. 109159
- 80 X 4000mm Boldrini 3-Roll Bending Machine; Stk. 109154
- 80mm X 4000mm MRT Roll Bending Machine; Stk. 109280



108414



106694



109211



108546

ROSCADORAS POR LAMINADO / Thread Rollers

- 3/16" X 1.5", Hartford #190-M, PPM 32 - 175, 5 Hp 3/230-460/60, C; Stk. 102493
- Hartford #20-225, 1970, 1/4" Thru 1/2" Screw, 4" Max Shk Lg.; Stk. 106160
- 1/4" X 2", Warren #WT-1000, HS, 1980, 1000 Ppm, Vib. Bowl, 7-1/2Hp; Stk. 105998
- 1/4" Roy "O" Special, Max: Thr Length 2-1/2", Shank Length 3"; Stk. 105120
- 3/8" x Warren #20, Screw Dia. Cap. #6 To 3/8", Blank Lg. Up To 6"; Stk. 106694
- 3/4" X Reed, # 300A Thread Roller, 1997, 7.9mm-32mm Thread Dia; Stk. 108414
- Waterbury-Farrel #10 Thread Roller, Thr. Dia. 1/4", Thr. Lg. 2"; Stk. 108327
- Hartford #0-500, Thread Roller, Ppm 500, Dia. #2 Thru #10, Blnk L; Stk. 108477
- Hartford #000-1000, 1977, 330-1000 Ppm, Bijur Auto Lube, Rotovane; Stk. 105781
- Hartford #10-300, Thread Lg. 1/8" To 3", Blank Lg. Up To 4"; Stk. 107599
- Hartford #10-400 Thread Roller; Stk. 109498
- Hartford #20-225 Thread Roller; Stk. 109497
- 5/16" Hartford #312M Horizontal Hand Feed Thread Roller, Thrd. Lg.; Stk. 108651
- Hartford #6-1200 Thread Roller; Stk. 109509
- National #0-500 Thread Roller; Stk. 109507
- Peltzer & Ehlers #NKM-K24 Thread Roller, Thr. Lg. 115mm; Stk. 109245
- Warren #WT-1000 High Spd Flat Die Thread Roller, Thrd. Dia 1/4"; Stk. 109454
- Kinefac #MC-6-F, Solid/Tubular Shafts .472"-2.953", Vibr Bowl, 7.5; Stk. 106895
- 1/4" PrutTon #125B-Hv High Speed Dual Feed Nail Thread Roller; Stk. 109041
- Kinefac #MC-6-F Thread Roller, Solid Or Tubular Shafts. 472"-2.953; Stk. 109220

SIERRAS / Saws

- 30", Motch&Merryweath, #3 Cold Cut, Cap: Rd 11-5/8", Sq 10-5/8", S; Stk. 69433
- Kaltenbach, #HDM-1300 Saw, Cap. Wall Dia. 1/2"-3/8", Beam Cap.; Stk. 108546
- Oliver #2094 Cut Off Saw, 10 Hp, Hyd. Feed Rate 20-400; Stk. 109110
- Oliver #394DH Cut-Off Saw, Max. Dia Blade 20", Up To 6" w & Up; Stk. 109256
- Ohler Model #K-1000 Cut-Off Saw, Stk. 109211

SOLDADORAS DE MALLAS / Wire Machinery, Welded Wire Mesh

- Ideal, # GA 200-36, 6 Head Mesh Welder; Stk. 108781
- Bsg/Jager, #Semia-Automatic; Stk. 107626
- 12mm - 5mm Schlater Wire Mesh Line (2m Wide); Stk. 109237

SOLDADORA PARA FABRICAR TANQUES / Welders, Seam

- Linde #SV1-600, In: 230/460v 3 Ph 60 Cyc; Out: 600/300 Amps; Stk. 105119

TALADROS RADIALES / Drills, Radial

- 5' X 3-1/2" Carlton #3A, 1951, Floor Type.; Stk. 101290
- Mazak #6-16 Holemaster, Spdle Spds: 50 Rpm 26-1540, 60 Rpm; Stk. 105502
- Zagar, 1955, Min 27", Length Of Stroke 10", Feed Range 3-1/8", Max; Stk. 59925



108545



108875

TERRAJADORAS DE TUERCAS / Tappers, Nut

- Nutap MAS-33, 2 Spdls, 5/8" Range, 18 Spdl Spds, 3/60/440; Stk. 104972
- Hagen & Goebel #12743, Vertical Twin Spindle, Auto. Nut Tapping; Stk. 108875
- Nutap MAS.14 Twin Spdle, Bent Shank Tap Type Nut Tapper, Thrd; Stk. 108867
- Nutap MAS.20TR, Twin Spdle, Bent Shank Tap Type Auto Tapp; Stk. 108863
- Nutap MAS14, Nut Sizes M.6-M.14, Nut Per Hour 7500 - 15000; Stk. 108086

... Y MUCHO MAS, TENEMOS EL INVENTARIO MÁS GRANDE EN LOS E.E.U.U. EN NATIONAL SOMOS ESPECIALISTAS EN MAQUINARIA METALÚRGICA

Cizallas
Cortadoras de tubo, cañería y barra
Dobladoras de tubo, barra y alambre
Encabezadoras en frío
Enderezadoras de laminas, tubo, barra y alambre
Maquinas de clavos y pernos

Enroscadoras
Estiradoras de alambre
Formadoras de tuercas y alambre
Formadoras de tubo
Laminadoras
Líneas de corte longitudinal y transversal

Maquinas para resortes
Perfiladoras para laminas
Pestañadoras
Prensas de todo tipo
Roladoras de láminas
Terminadoras de tubo

¡SI ES MAQUINARIA, NOSOTROS LA TENEMOS!

Estamos localizados a unos pasos del aeropuerto en la ciudad de Newark. • A solo minutos de la ciudad de Nueva York. • Nos encargamos de toda la transportación - Local o Internacional. • Hablamos Español, Alemán, Italiano y Portugués • También somos certificados en servicios de Avalúos y Liquidaciones

PARA MAS INFORMACIÓN CONTACTE A RAY ALVAREZ A RAY@NATIONALMACHY.COM

158 PARIS STREET, NEWARK, NEW JERSEY 07105 USA
TELÉFONOS +1.973.344.6100 • FAX +1.973.589.0944 • GRATIS DESDE MÉXICO +1.800.351.5394
WWW.NATIONALMACHY.COM • SALES@NATIONALMACHY.COM

